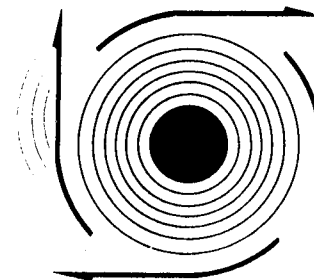


# HONDA

**GENERAL PURPOSE ENGINE  
GXV390K1**



**PARTS CATALOGUE**

17ZF50E1

© HONDA MOTOR CO., LTD. 1996

**1**

# INDEX

---

FOREWORD INDEX

1

---

ENGINE GROUP

2

---

PART NUMBER INDEX

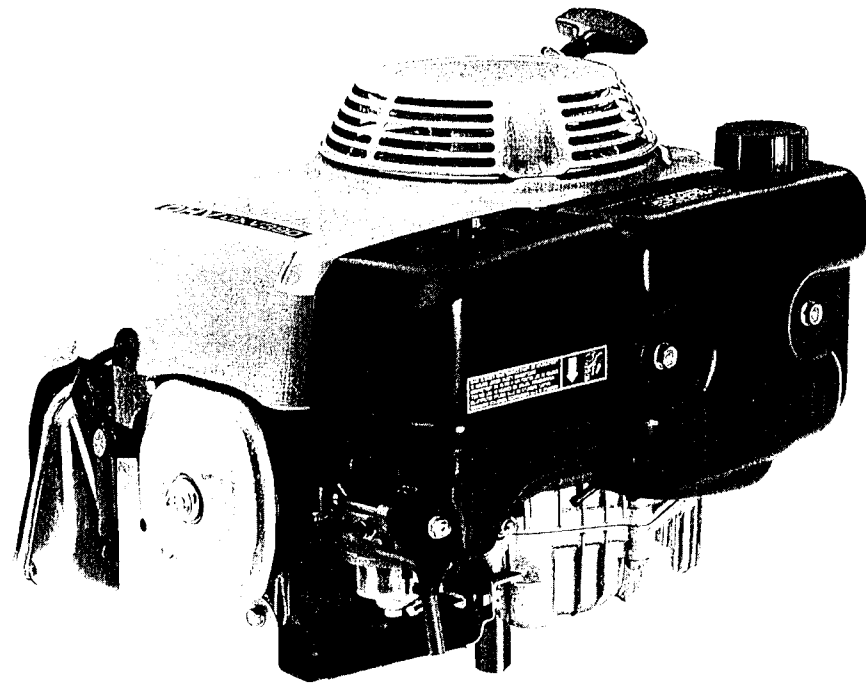
3

---

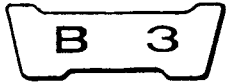
PART NAME INDEX

4

---



GXV390K1



## INSTRUCTION FOR USE OF PARTS CATALOGUE

This parts catalogue is compiled all service parts and flat rate time (F.R.T.) for model GXV390K1.

### I. How to order parts

#### 1. Information required

Replacement parts orders must contain both the **part number** and the **stamped number (s)** as described below. This is because any changes and modifications of parts are registered at HONDA with the pertinent parts and stamped numbers.

#### Numbers needed:

- (a) Carburetor parts: Part number and  
Stamped carburetor identification number
- (b) Engine parts: Part number and  
Stamped engine number

#### 2. Revisions

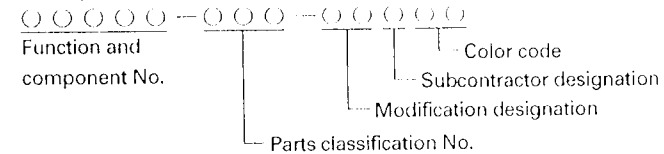
When modifications or additions to this parts catalogue are made, a revised edition will be issued at an appropriate time, with successively progressing revision numbers on the cover.

We recommend obtaining such revisions in order to keep your parts catalogue up-to-date at all times. To check whether a parts catalogue revision has been issued, please contact your HONDA distributor.

### II. How to read this parts catalogue

#### 1. Make-up of the part number

(Example) General parts



(Example) Bolts, nuts and other standard parts



#### 2. Color codes

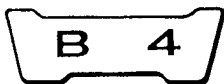
The color code at the end of the part number indicates the color. Codes below ZA in alphabetical order (such as ZA, ZB, ZC, etc.) do not indicate the color directly, but reference must be made to the HONDA code given in the "Description" column of this parts catalogue.

Color code	Color description
HONDA code	
R8	Bright red

#### 3. Abbreviations

The following abbreviations are used in this parts catalogue.

ASSY. ....	Assembly	A.C. ....	Alternating current
COMP. ....	Complete	D.C. ....	Direct current
R. ....	Right	IN. ....	Inlet
L. ....	Left	EX. ....	Exhaust
STD. ....	Standard	FR. ....	Front
MM ....	Millimeter	RR. ....	Rear
T (22T) ....	Tooth (22Teeth)	HEX. ....	Hexagonal
A ....	Ampere	P.T.O. ....	Power take off
V ....	Volt	C.D.I. ....	Capacitor discharge ignition
W ....	Watt		
L (100L) ....	Link (100Links)		



#### 4. Dimensions

All dimensions are given in millimeters (mm) except in the case of steel balls, tires and tire tubes.

Parts	Example	Interpretation
Bolt (Screw)	6 x 12	6mm diameter, 12mm length
Pin	8 x 14	8mm diameter, 14mm length
O-Ring	9.5 x 1.6	9.5mm diameter, 1.6mm thickness
Oil seal	14 x 24 x 5	14mm inside diameter, 24mm outside diameter, 5mm thickness
Tube	5 x 130	5mm inside diameter, 130mm length

#### 5. Supersedence of parts

Part numbers given under the part name in the "Description" column indicate that the part number has been superseded by that part number. HONDA may make such supersedence without notice.

#### 6. Assemblies

Sections framed with broken lines in the exploded view drawings are available as complete assemblies. (Their individual parts can also be obtained.)

#### 7. Required quantity

The number given in the "Reqd. No." column indicates the quantity of parts used in the section described in that block.

Parts with quantities in ( ), ( represent optional parts.

"N" means order as needed.

#### 8. Part modifications and applicable serial numbers

In cases where a part has been modified, the serial number of the first product (or engine, carburetor) bearing the modification is listed in the "Serial No." column.

#### 9. Illustration

Illustration of parts given in parts catalogue diagrams are provided for convenience in identifying parts and may differ from the actual configuration of parts.

\* ( ), ( ) appended to the title number of this text means that the same title number continues from the previous page.

#### 10. Models, types and applicable serial numbers

Models, types and applicable serial Nos. given in this parts catalogue can be identified as follows.

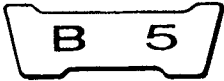
Parts with types are exclusive for models destined for those types.

If no types are listed, parts are for common use.

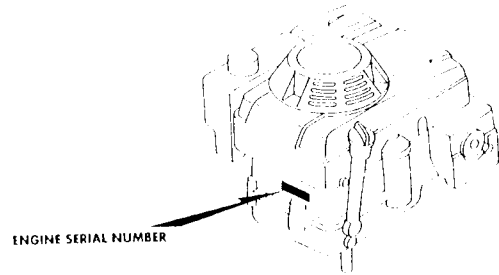
Model	Type	Applicable engine serial No.	Applicable carburetor serial No.
GXV390K1	DAE	GJAA-6000001~	BE86G [A]
	DAET		
	DAE1		BE86H [A]
	DA2		
	DCA		BE86G [A]
	DN		
	DNE		
	DNE4		
	DN4		
	DXE		
	DXE2		
	DXE4		
DX2			
DX44			

\* Of carburetor identification numbers, only the portions underlined in the example below are used for registration.

BE48A [A] NG ヲ

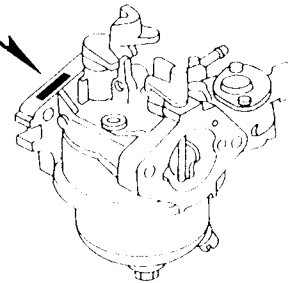


11. Location of stamped serial number



DZF5 - A

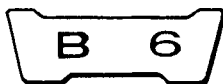
CARBURETOR IDENTIFICATION NUMBER



DZF5 - B

12. The characteristics of respective base types are as follows.

Specifications	Model	GXV390K1													
	Type	DAE	DAET	DAE1	DA2	DCA	DN	DNE	DNE4	DN4	DXE	DXE2	DXE4	DX2	DX44
Recoil starter		●	●	●	●		●	●	●	●	●	●	●	●	●
Muffler		●	●	●	●		●	●	●	●	●	●	●	●	●
Fuel tank			●				●	●	●	●	●	●	●	●	●
Starter motor		●	●	●		●		●	●		●	●	●		●



### 13. Fuel Hose, General Purpose Hoses and Vinyl Hose

- The standard part fuel hose, general purpose hose and vinyl hose may be substituted by the coiled bulk part.
- When ordering the standard part fuel hose, general purpose hose and vinyl hose use the bulk part number written in the parts catalog in brackets ( ) underneath the part name.
- When exchanging the hose, cut and use at the specified length as mentioned in the part name.

(For the method of cutting the bulk part, and method of filling out orders etc., please refer to the instructions issued with the bulk part.)

#### Bulk part number of fuel hose, general purpose hose and vinyl hose.

Example: 9 5 0 0 1 — 7 5 0 0 1 — 5 0 M

Bulk Part Number : Refers to the bulk part.

Marking Code (hose type) : (fuel hose and general purpose hose)  
Change code (for added hose) : (Vinyl hose)

- Indicates number mark or change sequence, however, the code for the bulk part must be strictly 0 (zero).

Types of Code :

- |             |   |                |              |              |                |
|-------------|---|----------------|--------------|--------------|----------------|
| • Fuel Hose | 5 : Black inside braid                                  | • General Hose | 1 : Ash gray | • Vinyl hose | 1 : Clear      |
|             | 2 : Red outside braid<br>(3 mm inside dia. only)        |                | 2 : Ash gray |              | 2 : Black      |
|             | 6 : Black   |                | 3 : Black    |              | 3 : Light red  |
|             | 3 : Red (3 mm inside dia. only)                         |                | 5 : Black    |              | 7 : Pale black |
|             | 4 : Ash gray with red stripe<br>(3 mm inside dia. only) |                |              |              | 6 : Light red  |

Lengths : 001 : 1 m (standard)

003 : 3 m

008 : 8 m

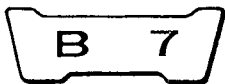
I.D code : (fuel hose and general purpose hose) ID./OD. code : (vinyl hose)

30 : 3.0 mm	11 : 11 mm	01 : ID. 2.9, OD. 6.8 mm	14 : ID. 6.0, OD. 9.0 mm	37 : ID. 11.0, OD. 15.0 mm
35 : 3.5 mm	91 : 12 (outside dia. 15) mm	03 : ID. 3.0, OD. 6.0 mm	17 : ID. 7.0, OD. 9.0 mm	38 : ID. 12.0, OD. 13.0 mm
45 : 4.5 mm	92 : 12 (outside dia. 16) mm	05 : ID. 3.5, OD. 6.5 mm	19 : ID. 7.0, OD. 11.0 mm	39 : ID. 12.0, OD. 14.0 mm
50 : 5.0 mm	12 : 12 (outside dia. 17) mm	07 : ID. 4.0, OD. 7.0 mm	21 : ID. 8.0, OD. 9.0 mm	40 : ID. 12.0, OD. 16.0 mm
55 : 5.3 mm,	14 : 14 mm	08 : ID. 4.5, OD. 6.5 mm	23 : ID. 8.0, OD. 12.0 mm	43 : ID. 13.0, OD. 15.0 mm
5.5 mm	17 : 17 mm	09 : ID. 4.5, OD. 8.0 mm	25 : ID. 9.0, OD. 11.0 mm	45 : ID. 14.0, OD. 18.0 mm
65 : 6.5 mm		12 : ID. 5.0, OD. 7.0 mm	27 : ID. 9.0, OD. 13.0 mm	50 : ID. 16.0, OD. 19.0 mm
70 : 7.0 mm		10 : ID. 5.0, OD. 8.0 mm	33 : ID. 10.0, OD. 14.0 mm	55 : ID. 17.5, OD. 20.5 mm
75 : 7.3 mm,		11 : ID. 5.0, OD. 9.0 mm	36 : ID. 11.0, OD. 13.0 mm	60 : ID. 22.0, OD. 27.0 mm
7.5 mm				
80 : 8.0 mm				

Hose Type : 1 : Fuel Hose  
5 : General Hose  
3 : Vinyl hose

Ⓢ CAUTION: It is DANGEROUS to confuse the fuel hose with the general purpose hose or vinyl hose.

Never use a general purpose hose or vinyl hose in place of a fuel hose or vice versa. Always use the correct bulk part in the parts list, according to the service manual or the instructions issued with the bulk part.



### III. How to use the flat rate time (F.R.T.)

This F.R.T. (Flat Rate Time) is used to determine the standard labor time allowed for replacement of parts covered by the warranty during the period the warranty is in effect. The F.R.T. for those parts which are not listed herein should be determined from the operation closely related to the replacement of that part.

#### 1. The F.R.T. is based on the following servicing conditions

- A liberal allowance is added to the net servicing time.
- Standard times specified are based on the condition that the necessary servicing tools listed in the service manual which describes the HONDA service policy are available close at hand and the work performed by a mechanic with normal skill.
- Time required for inspection and operational test following the servicing is included in the F.R.T.
- The F.R.T. for "•" marked parts are same as the F.R.T. for the representative part above.
- The F.R.T. shown with ( \* ) includes engine removal and installation.

#### 2. Method of computing

The job times are listed in tenth of an hour to simplify computation.

- (Example)      0.3 = 18 minutes  
                   5.6 = 5 hours and 36 minutes

CONVERSION CHART			
Hours	Minutes	Hours	Minutes
0.1	6	0.6	36
0.2	12	0.7	42
0.3	18	0.8	48
0.4	24	0.9	54
0.5	30	1.0	60

#### 3. Computing the F.R.T.

When several jobs are performed at the same time, make the calculation in the following manner.

Parts and their F.R.T. described below are the sample and have no relation to the text.

##### a. Jobs of non duplicated nature

The F.R.T. for the job is obtained by totalling the F.R.T. for each part replaced.

(Example) Replacement of cylinder head gasket and carburetor.

Service item	F.R.T.
CYLINDER HEAD GASKET	0.3
CARBURETOR	0.4

The F.R.T. for the job is :  $0.3 + 0.4 = 0.7$

##### b. Jobs of duplicated nature

Take the F.R.T. for the last part to be replaced.

(Example) Replacement of piston and cylinder head gasket.

Service item	F.R.T.
CYLINDER HEAD GASKET	0.3
PISTON	1.4

The F.R.T. for the job is : 1.4

##### c. Jobs of partially related nature

Total up the F.R.T. for all of the parts replaced and then subtract the F.R.T. for the duplicated operation.

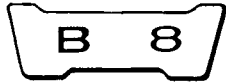
(Example) Replacement of valve, piston and cylinder head.

Service item	F.R.T.
VALVE	0.5
PISTON	1.4
CYLINDER HEAD	0.3

The F.R.T. for the job is :  $(0.5 + 1.4) - 0.3 = 1.6$

Cylinder head is the duplicated operations.





4. Adjustment and cleaning

Item	Service item	F.R.T.
Adjustment	Tappets	0.3
	Carburetor	0.2
	Governor	0.2
Cleaning	Carburetor	0.6
	Air cleaner	0.2
	Spark plug	0.1

**B 9****ENGINE GROUP**

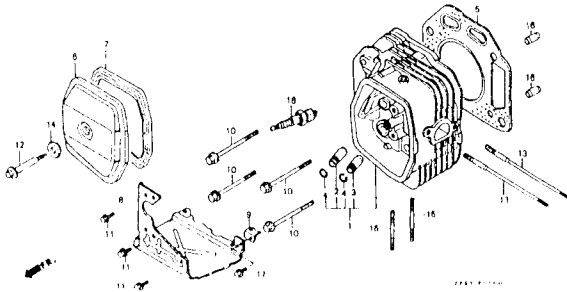
[ E ]

•Ref.No.on the Index illustration may be different from that in the text.

**C 1**

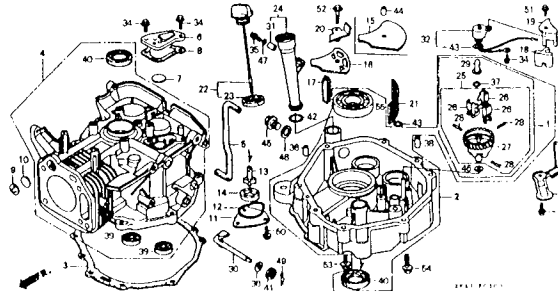
Cylinder head

E-1

**C 2**

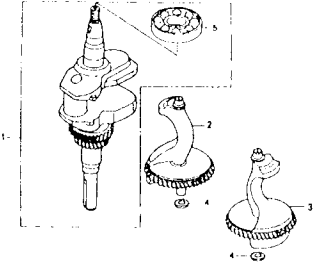
Cylinder barrel

E-3

**C 4**

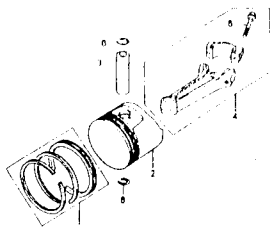
Crankshaft

E-7

**C 5**

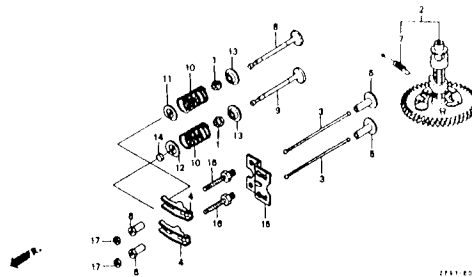
Piston

E-8

**C 6**

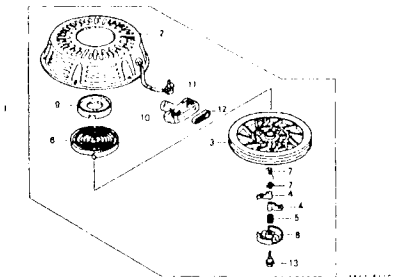
Camshaft-Valve

E-9

**C 7**

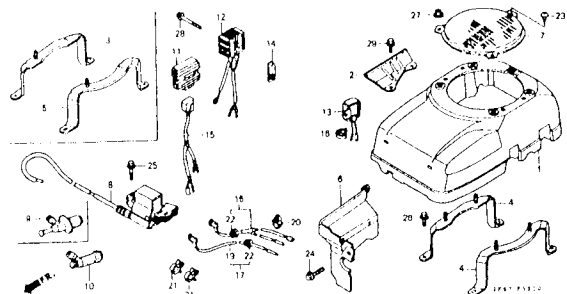
Recoil starter

E-11

**C 8**

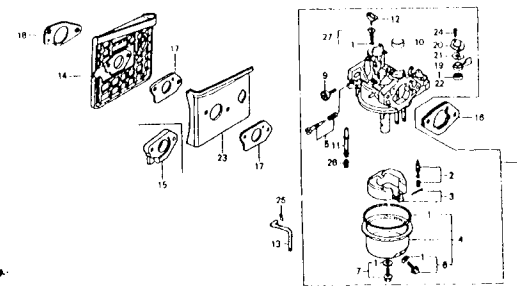
Fan cover

E-12

**C 10**

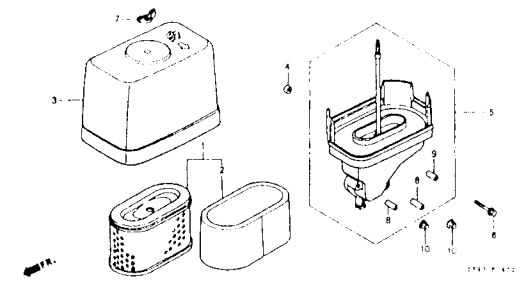
Carburetor

E-14

**C 12**

Air cleaner

E-15



# B 10

## ENGINE GROUP

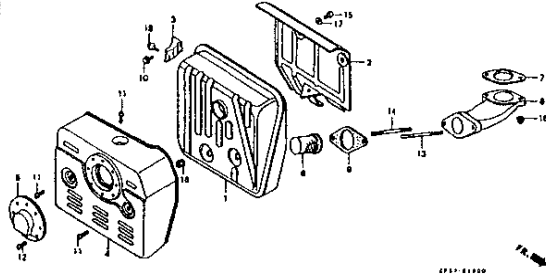
[ E ]

\*Ref.No.on the Index illustration may be different from that in the text.

C 13

Muffler

E-16

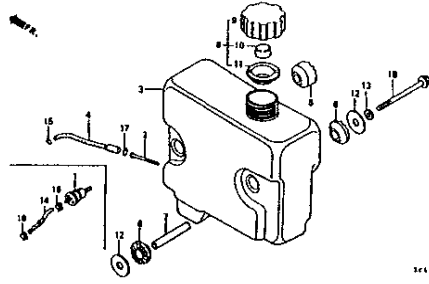


2201-02200

C 14

Fuel tank

E-17

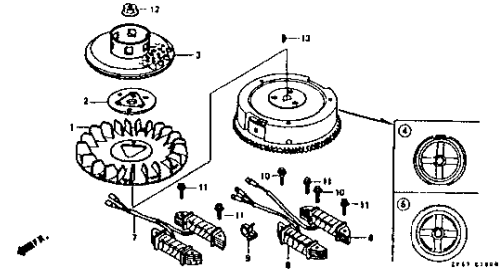


2201-01100

C 15

Flywheel

E-19

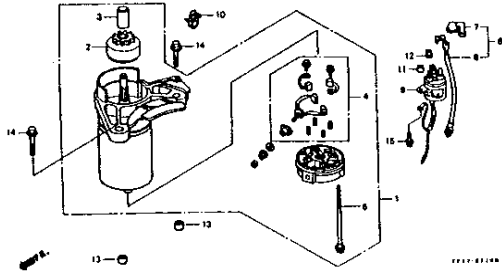


2201-01300

C 16

Starter motor

E-21

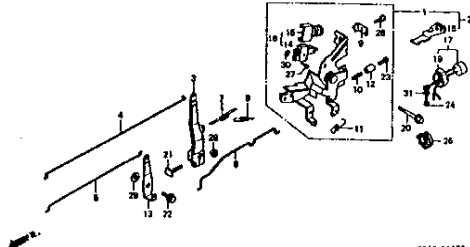


2201-02100

D 1

Control (1)

E-22

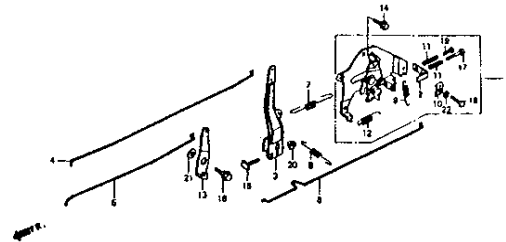


2201-01200

D 3

Control (2)

E-22-1

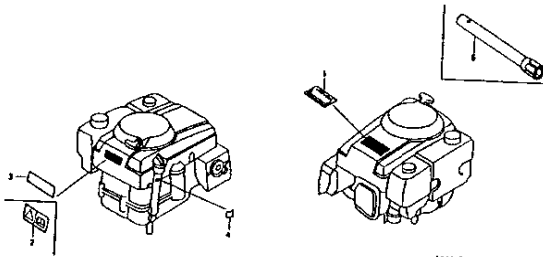


2201-01200

D 4

Label

E-28



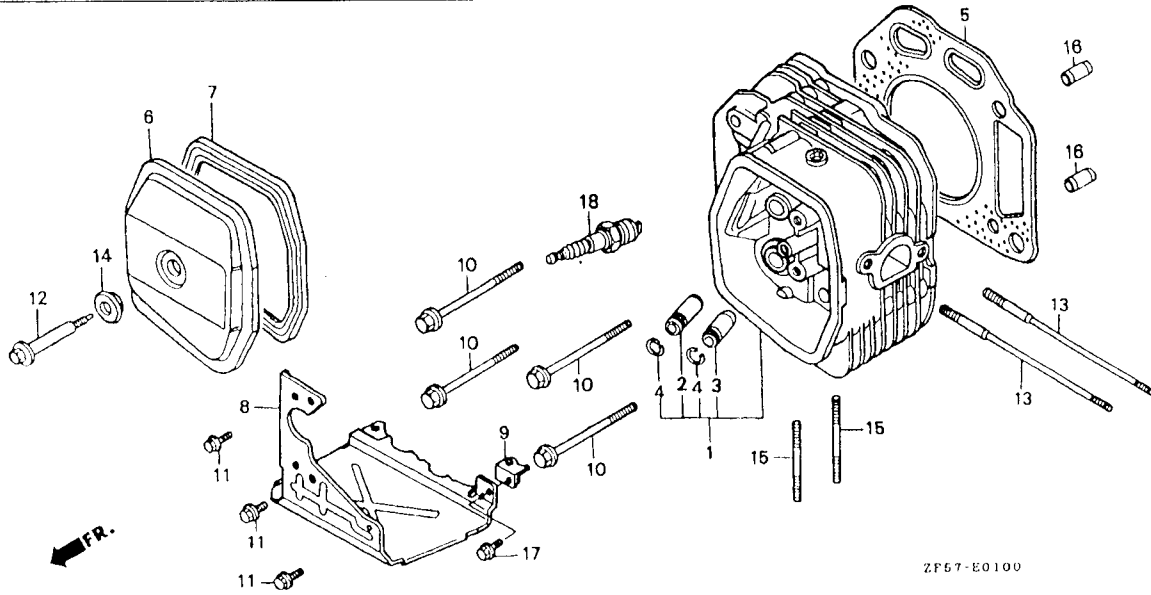
2201-02200

2

C 1

Cylinder head

E - 1



ZF57-E0100

ZF57E0100

Service Item F.R.T.

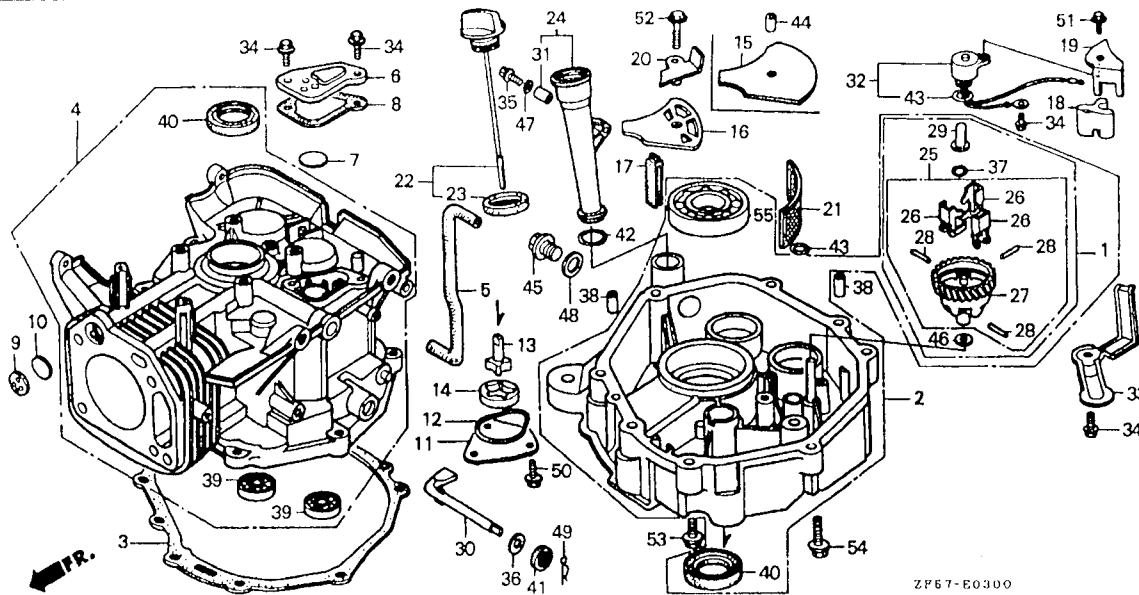
HEAD COMP., CYLINDER.....	1.0
GUIDE, IN. VALVE.....	0.8
(ADD 0.2 FOR EACH.)	
GASKET, CYLINDER HEAD.....	0.6
COVER, HEAD.....	0.1
.PACKING, HEAD COVER	
.PLUG, SPARK	
BOLT, STUD, 8X138.5.....	0.2
(ADD 0.1 FOR EACH.)	
.BOLT, STUD, 8X32	
(ADD 0.1 FOR EACH.)	

Ref. No.	Part No.	Description	Reqd. No. GXV 390K1	Serial No.	Type
1	12200-ZF5-000	HEAD COMP., CYLINDER.....	1		
2	12204-ZE2-306	GUIDE, IN. VALVE (OVER SIZE)..	(1)		
3	12205-ZE2-305	GUIDE, EX. VALVE (OVER SIZE)..	(1)		
4	12216-ZE2-300	CLIP, VALVE GUIDE.....	2		
5	12251-ZF5-000	GASKET, CYLINDER HEAD.....	1		
6	12310-ZE8-000	COVER, HEAD.....	1		
7	12391-ZE8-000	PACKING, HEAD COVER.....	1		
8	18345-ZF5-020	COVER, UNDER.....	1	-----	DAE, DAET, DAE1, DA2, DN, DNE, DNE4, DN4, DXE, DXE2, DXE4, DX2, DX44
9	18347-ZE8-000	STAY COMP., UNDER COVER.....	1	-----	DAE, DAET, DAE1, DA2, DN, DNE, DNE4, DN4, DXE, DXE2, DXE4, DX2, DX44
10	90003-ZF5-003	BOLT, FLANGE, 10X85.....	4		
11	90013-883-000	BOLT, FLANGE, 6X12.....	3	-----	DAE, DAET, DAE1, DA2, DN, DNE, DNE4, DN4, DXE, DXE2, DXE4, DX2, DX44
12	90014-ZE8-000	BOLT, HEAD COVER.....	1		
13	90042-ZE8-000	BOLT, STUD, 8X131.5.....	2	-----	DAE, DAET, DAE1, DA2, DN, DNE, DNE4, DN4, DXE, DXE2, DXE4, DX2, DX44
	90042-ZE8-700	BOLT, STUD, 8X138.5.....	2	-----	DCA
14	90441-ZE2-010	WASHER COMP., HEAD COVER.....	1		
15	92900-08032-0B	BOLT, STUD, 8X32.....	2		
16	94301-12200	PIN, DOWEL, 12X20.....	2		
17	95701-06012-00	BOLT, FLANGE, 6X12.....	1	-----	DAE, DAET, DAE1, DA2, DN, DNE, DNE4, DN4, DXE, DXE2, DXE4, DX2, DX44
18	98079-55846	PLUG, SPARK (BPR5ES NGK).....	1		

C 2

Cylinder barrel

E - 3



Service Item	F.R.T.
PAN ASSY., OIL.....	0.3
.SWITCH COMP., OIL LEVEL	
PACKING, OIL PAN.....	0.2
.SCREEN, OIL FILTER	
BARREL ASSY., CYLINDER.....	1.7
TUBE, BREATHER.....	0.1
.O-RING, PUMP COVER	
.ROTOR COMP., INNER (INC. RELATIVE PART)	
.EXTENSION, OIL FILLER	
.O-RING, 22.5X2.2	
SLIDER, GOVERNOR.....	0.4
.SHAFT, GOVERNOR ARM	
.OIL SEAL, 35X52X8	
BEARING, RADIAL BALL, 6207.....	0.5

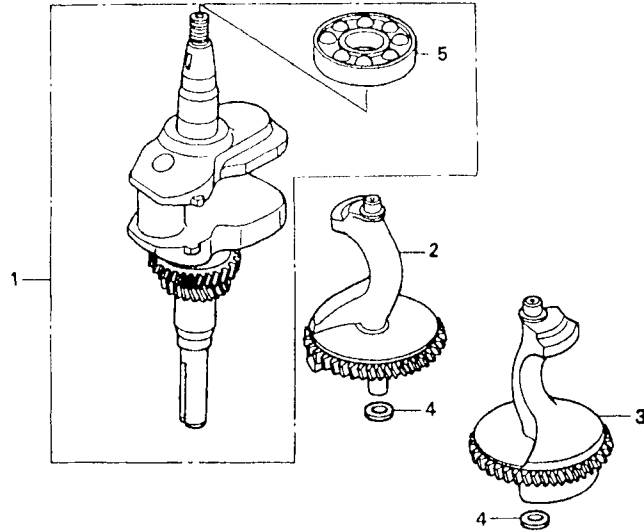
Ref. No.	Part No.	Description	Reqd. No.	Serial No.	Type
1	06165-ZE3-000	GOVERNOR KIT.....	(1)		
2	11300-ZF5-W22	PAN ASSY., OIL.....	1	-----	DAE,DAET,DAE1,DN,DNE,DNE4,DN4,DXE,DXE4
	11300-ZF5-W32	.....	1	-----	DA2,DCA,DXE2,DX2,DX44
3	11381-ZE9-800	PACKING, OIL PAN.....	1		
4	12000-ZF5-030	BARREL ASSY., CYLINDER.....	1		
5	12315-ZF5-000	TUBE, BREATHER.....	1		
6	12370-ZF5-000	CAP, BREATHER CHAMBER.....	1		
7	12372-ZE2-300	VALVE, BREATHER.....	1		
8	12373-ZE8-000	PACKING, BREATHER CAP.....	1		
9	12375-ZE9-010	PLATE, ONEWAY VALVE.....	1	-----	DA2,DCA,DXE2,DX2,DX44
10	12376-ZE8-000	VALVE, ONEWAY.....	1	-----	DA2,DCA,DXE2,DX2,DX44
11	15130-ZE8-000	COVER, OIL PUMP.....	1		
12	15131-ZE9-003	O-RING, PUMP COVER.....	1		
13	15330-ZE8-000	ROTOR COMP., INNER.....	1		
14	15332-891-003	ROTOR, OIL PUMP OUTER.....	1		
15	15334-ZE8-010	PLATE, OIL FILTER.....	1	-----	DAE,DAET,DAE1,DN,DNE,DNE4,DN4,DXE,DXE4
16	15334-ZE8-811	PLATE, OIL FILTER.....	1	-----	DA2,DCA,DXE2,DX2,DX44
17	15335-ZE9-000	RUBBER, OIL RETURN.....	1		
18	15336-ZE8-000	STOPPER, OIL.....	1	-----	DA2,DCA,DXE2,DX2,DX44
19	15337-ZE8-000	PLATE, OIL STOPPER.....	1	-----	DA2,DCA,DXE2,DX2,DX44
20	15420-ZE8-000	PLATE COMP., SUCTION.....	1	-----	DA2,DCA,DXE2,DX2,DX44
21	15421-ZE9-003	SCREEN, OIL FILTER.....	1		
22	15600-ZF5-000	CAP ASSY., OIL FILLER.....	1		
23	15625-ZE8-000	PACKING, OIL FILLER CAP.....	1		
24	15630-ZE8-000	EXTENSION, OIL FILLER.....	1		

Ref. No.	Part No.	Description	Reqd. No. GXV 339X1	Serial No.	Type
25	16510-ZE3-000	GOVERNOR ASSY.....	1		
26	16511-ZE8-000	WEIGHT, GOVERNOR.....	3		
27	16512-ZE3-000	HOLDER, GOVERNOR WEIGHT.....	1		
28	16513-ZE2-000	PIN, GOVERNOR WEIGHT.....	3		
29	16531-ZE2-000	SLIDER, GOVERNOR.....	1		
30	16541-ZE8-010	SHAFT, GOVERNOR ARM.....	1		
31	17240-ZE6-000	COLLAR, EXTENSION.....	1		
32	35410-ZF5-003	SWITCH COMP., OIL LEVEL.....	1	-----	DA2,DCA,DXE2,DX2,DX44
33	35419-ZF5-000	PROTECTOR, SWITCH.....	1	-----	DA2,DCA,DXE2,DX2,DX44
34	90013-883-000	BOLT, FLANGE, 6X12.....	2	-----	DAE,DAET,DAE1,DN,DNE,DNE4,DN4,DXE,DXE4
35	90014 ZE6-000	BOLT, FLANGE, 6X35.....	2	-----	DA2,DCA,DXE2,DX2,DX44
36	90406-VM6-000	WASHER, THRUST, 8.1MM.....	1		
37	90602-ZE1-000	CLIP, GOVERNOR HOLDER.....	1		
38	90701-HC4-000	PIN, DOWEL, 8X12.....	2		
39	91001-ZF5-003	BEARING, RADIAL BALL, 6202....	2		
40	91201-ZE3-004	OIL SEAL, 35X52X8.....	2		
41	91203-952-771	OIL SEAL, 8X14X5.....	1		
42	91301-ZE9-003	O-RING, 22.5X2.2.....	1	-----	DAE,DAET,DAE1,DN,DNE,DNE4,DN4,DXE,DXE4
43	91302-ZE9-003	O-RING, 11.8X2.4.....	1	-----	DAE,DAET,DAE1,DN,DNE,DNE4,DN4,DXE,DXE4
44	91501-ZF5-000	COLLAR, OIL FILTER SETTING....	1	-----	DAE,DAET,DAE1,DN,DNE,DNE4,DN4,DXE,DXE4
45	92800-20000	BOLT, DRAIN PLUG, 20MM.....	1		
46	94101-06800	WASHER, PLAIN, 6MM.....	1		
47	94103-06700	WASHER, PLAIN, 6MM.....	1		
48	94109-20000	WASHER, DRAIN PLUG, 20MM.....	1		
49	94251-10000	PIN, LOCK, 10MM.....	1		
50	95701-06012-00	BOLT, FLANGE, 6X12.....	1		
51	95701-06016-00	BOLT, FLANGE, 6X16.....	1	-----	DA2,DCA,DXE2,DX2,DX44
52	95701-06025-00	BOLT, FLANGE, 6X25.....	1	-----	DA2,DCA,DXE2,DX2,DX44
53	95701-08040-08	BOLT, FLANGE, 8X40.....	6		
54	95701-08060-08	BOLT, FLANGE, 8X60.....	1		
55	96100-62073-00	BEARING, RADIAL BALL, 6207....	1		

C 4

Crankshaft

E - 7



ZF57-R0700

ZF57R000

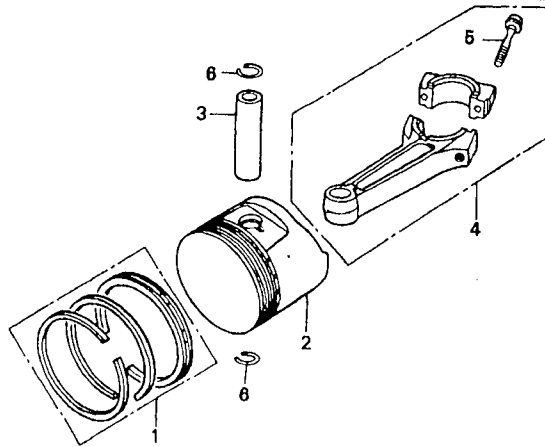
Service	Item	F.R.T.
CRANKSHAFT COMP.....		1.1
WEIGHT A, BALANCER.....		0.4
(ADD 0.1 FOR EACH.)		
BEARING, RADIAL BALL, 6207.....		1.3

Ref. No.	Part No.	Description	Reqd. No. GXV 390K1	Serial No.	Type
1	13310-ZF5-030	CRANKSHAFT COMP.....	1		
2	13351-ZF5-030	WEIGHT A, BALANCER.....	1		
3	13356-ZF5-040	WEIGHT B, BALANCER.....	1		
4	90417-HA0-000	WASHER, THRUST, 15MM.....	2		
5	96100-62073-00	BEARING, RADIAL BALL, 6207.....	1		

C 5

Piston

E - 8



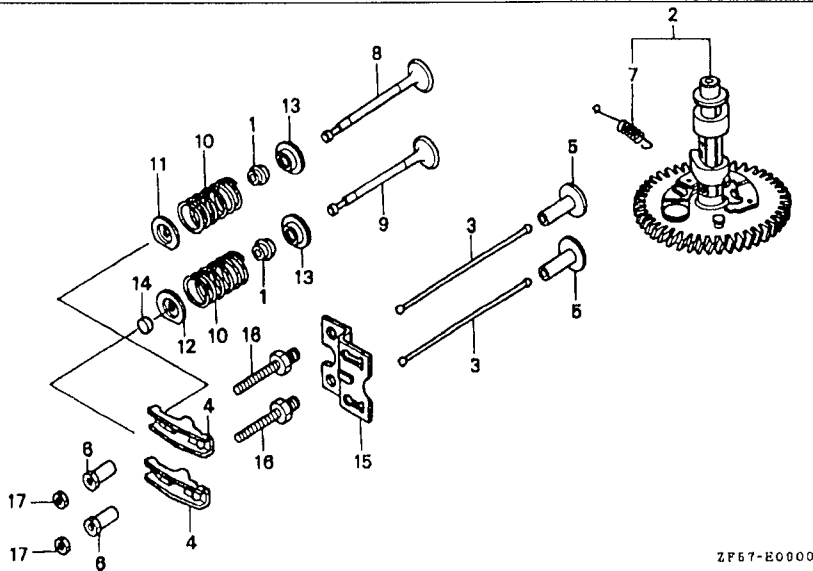
Service Item	F.R.T.
RING SET, PISTON.....	1.1
.ROD ASSY., CONNECTING	
PISTON.....	1.2

ZF67-E0800

ZF67E0800

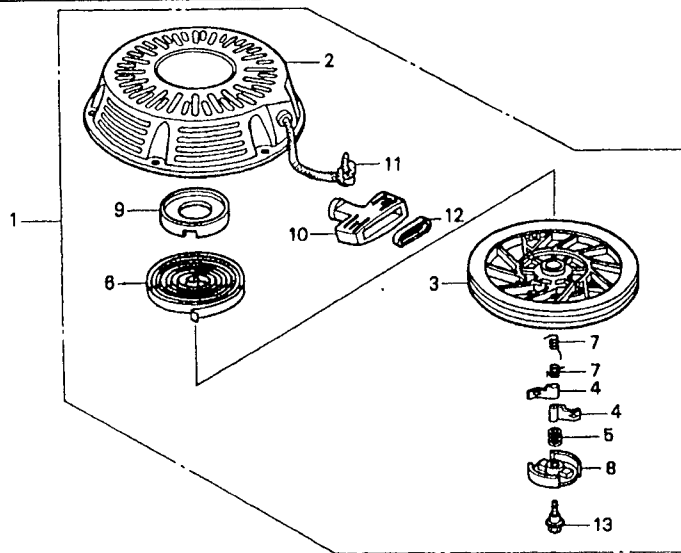
Ref. No.	Part No.	Description	Reqd. No. GXV 390K1	Serial No.	Type
1	13010-ZF6-003	RING SET, PISTON (STD.)			
		(NIPPON)	1		
	13010-ZF6-005	RING SET, PISTON (STD.)			
		(TEIKOKU)	1		
	13011-ZF6-003	RING SET, PISTON (0.25)			
		(NIPPON)	(1)		
	13011-ZF6-005	RING SET, PISTON (0.25)			
		(TEIKOKU)	(1)		
	13012-ZF6-003	RING SET, PISTON (0.50)			
		(NIPPON)	(1)		
	13012-ZF6-005	RING SET, PISTON (0.50)			
		(TEIKOKU)	(1)		
2	13101-ZF6-W00	PISTON (STD.).....	1		
	13102-ZF6-W00	PISTON (0.25).....	(1)		
	13103-ZF6-W00	PISTON (0.50).....	(1)		
3	13111-ZF6-000	PIN, PISTON.....	1		
4	13200-ZE9-010	ROD ASSY., CONNECTING.....	1		
	13200-ZE9-315	ROD ASSY., CONNECTING (0.25 UNDER SIZE)	(1)		
5	90001-ZE8-000	BOLT, CONNECTING ROD.....	2		
6	90601-ZE3-000	CLIP, PISTON PIN, 20MM.....	2		





Service Item	F.R.T.
CAMSHAFT ASSY.....	0.6
.LIFTER, VALVE	
ROD, PUSH.....	0.2
.ARM, VALVE ROCKER	
.PIVOT, ROCKER ARM	
.ROTATOR, VALVE	
VALVE, IN.....	0.7
(ADD 0.1 FOR EACH.)	

Ref. No.	Part No.	Description	Reqd. No. GXV 390K1	Serial No.	Type
1	12209-ZE8-003	SEAL, VALVE STEM.....	2		
2	14100-ZF5-L02	CAMSHAFT ASSY.....	1	-----	DCA
	14100-ZF5-010	.....	1	-----	DAE, DAET, DAE1, DA2, DN, DNE, DNE4, DN4, DXE, DXE2, DXE4, DX2, DX44
3	14410-ZE3-013	ROD, PUSH.....	2		
4	14431-ZE2-000	ARM, VALVE ROCKER.....	2		
5	14441-ZE2-000	LIFTER, VALVE.....	2		
6	14451-ZE1-013	PIVOT, ROCKER ARM.....	2		
7	14568-ZE1-000	SPRING, WEIGHT RETURN.....	1		
8	14711-ZE3-000	VALVE, IN.....	1		
9	14721-ZE3-000	VALVE, EX.....	1		
10	14751-ZE2-003	SPRING, VALVE.....	2		
11	14771-ZE2-000	RETAINER, IN. VALVE SPRING....	1		
12	14773-ZE2-000	RETAINER, EX. VALVE SPRING....	1		
13	14775-ZE2-010	SEAT, VALVE SPRING.....	2		
14	14781-ZE2-000	ROTATOR, VALVE.....	1		
15	14791-ZE9-000	GUIDE, PUSH ROD.....	1		
16	90012-ZE0-010	BOLT, PIVOT (8MM).....	2		
17	90206-ZE1-000	NUT, PIVOT ADJUSTING.....	2		



ZF57-R1100

ZF31E1100

Service Item F.R.T.

STARTER ASSY., RECOIL.....	0.1
PULLEY, RECOIL STARTER.....	0.3
.SPRING, STARTER RETURN	
.ROPE, RECOIL STARTER	
RATCHET, STARTER.....	0.2

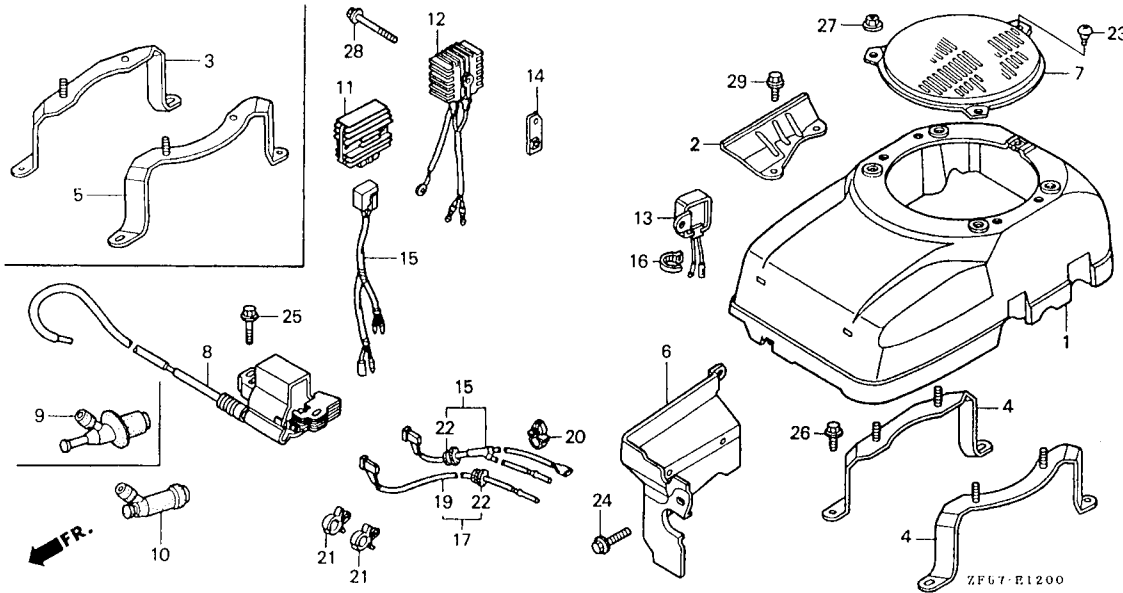
← MFR.

2

Ref. No.	Part No.	Description	QTY	Serial No.	Type
1	28400-ZE3-W01ZA	STARTER ASSY., RECOIL *R8*.....BRIGHT RED	1	-----	DAE,DAET,DAE1,DA2,DN,DNE,DNE4,DN4,DXE,DXE2,DXE4,DX2,DX44
2	28410-ZE3-W01ZA	CASE COMP., RECOIL STARTER *R8*.....BRIGHT RED	1	-----	DAE,DAET,DAE1,DA2,DN,DNE,DNE4,DN4,DXE,DXE2,DXE4,DX2,DX44
3	28421-ZE3-W01	PULLEY, RECOIL STARTER.....	1	-----	DAE,DAET,DAE1,DA2,DN,DNE,DNE4,DN4,DXE,DXE2,DXE4,DX2,DX44
4	28422-ZE2-W01	RATCHET, STARTER.....	2	-----	DAE,DAET,DAE1,DA2,DN,DNE,DNE4,DN4,DXE,DXE2,DXE4,DX2,DX44
5	28441-ZE2-W01	SPRING, FRICTION.....	1	-----	DAE,DAET,DAE1,DA2,DN,DNE,DNE4,DN4,DXE,DXE2,DXE4,DX2,DX44
6	28442-ZE2-W01	SPRING, STARTER RETURN.....	1	-----	DAE,DAET,DAE1,DA2,DN,DNE,DNE4,DN4,DXE,DXE2,DXE4,DX2,DX44
7	28443-ZE2-W01	SPRING, RATCHET.....	2	-----	DAE,DAET,DAE1,DA2,DN,DNE,DNE4,DN4,DXE,DXE2,DXE4,DX2,DX44
8	28444-ZE2-W01	RETAINER, SPRING.....	1	-----	DAE,DAET,DAE1,DA2,DN,DNE,DNE4,DN4,DXE,DXE2,DXE4,DX2,DX44
9	28445-ZE2-W01	HOLDER, SPRING.....	1	-----	DAE,DAET,DAE1,DA2,DN,DNE,DNE4,DN4,DXE,DXE2,DXE4,DX2,DX44
10	28461-ZE2-W01	GRIP, STARTER.....	1	-----	DAE,DAET,DAE1,DA2,DN,DNE,DNE4,DN4,DXE,DXE2,DXE4,DX2,DX44
11	28462-ZE3-W01	ROPE, RECOIL STARTER.....	1	-----	DAE,DAET,DAE1,DA2,DN,DNE,DNE4,DN4,DXE,DXE2,DXE4,DX2,DX44
12	28469-ZE2-W01	GRID, REINFORCEMENT.....	1	-----	DAE,DAET,DAE1,DA2,DN,DNE,DNE4,DN4,DXE,DXE2,DXE4,DX2,DX44
13	90004-ZE2-W01	SCREW, CENTER.....	1	-----	DAE,DAET,DAE1,DA2,DN,DNE,DNE4,DN4,DXE,DXE2,DXE4,DX2,DX44

Service Item F.R.T.

COVER COMP., FAN.....	0.2
.RECTIFIER ASSY., REGULATOR	
.RECTIFIER ASSY., SILICON	
.RECTIFIER COMP., SILICON	
.CORD, STOP SWITCH	
BRACKET, R. FAN COVER.....	0.3
.BRACKET, FAN COVER	
.BRACKET, L. FAN COVER	
.SHROUD	
.COIL ASSY., IGNITION	
SEAL, LAWN COVER.....	0.1



Ref. No.	Part No.	Description	Reqd. No. GXV 330X1	Serial No.	Type
1	19610-ZE9-V00	COVER COMP., FAN.....	1	-----	DCA
	19610-ZF5-V10	.....	1	-----	DAE, DAET, DAE1, DNE, DNE4, DXE, DXE2, DXE4, DX44
	19610-ZF5-V20	.....	1	-----	DA2, DN, DN4, DX2
2	19612-ZF5-010	PLATE, SIDE.....	1	-----	DA2, DN, DN4, DX2
3	19617-ZE9-V00	BRACKET, R. FAN COVER.....	1	-----	DCA
4	19617-ZF5-V00	BRACKET, FAN COVER.....	2	-----	DAE, DAET, DAE1, DA2, DN, DNE, DNE4, DN4, DXE, DXE2, DXE4, DX2, DX44
5	19627-ZE9-V00	BRACKET, L. FAN COVER.....	1	-----	DCA
6	19631-ZE9-V00	SHROUD.....	1	-----	DCA
7	19635-ZE8-702	SEAL, LAWN COVER.....	1	-----	DCA
8	30500-ZE9-L32	COIL ASSY., IGNITION.....	1	-----	
9	30700-ZE8-701	CAP ASSY., NOISE SUPPRESSOR...	1	-----	DCA
10	30700-ZF5-013	CAP ASSY., NOISE SUPPRESSOR...	1	-----	DAE, DAET, DAE1, DA2, DN, DNE, DNE4, DN4, DXE, DXE2, DXE4, DX2, DX44
11	31600-ZE2-861	RECTIFIER ASSY., REGULATOR....	1	-----	DAE1, DCA
12	31700-ZE8-003	RECTIFIER ASSY., SILICON.....	1	-----	DAE, DAET
13	31700-ZF5-003	RECTIFIER COMP., SILICON.....	1	-----	DNE, DNE4, DXE, DXE2, DXE4, DX44
14	31717-ZF5-V00	BRACKET, RECTIFIER.....	1	-----	DAE, DAET
15	32110-ZB5-G30	HARNES ASSY., SUB WIRE.....	1	-----	DCA
16	32161-404-610	BAND B1, WIRE.....	1	-----	DAE, DAET, DNE, DNE4, DXE, DXE2, DXE4, DX44
17	36101-ZE8-000	CORD, STOP SWITCH.....	1	-----	DN, DNE, DNE4, DN4, DXE, DXE4
18	36101-ZE8-810	CORD, STOP SWITCH.....	1	-----	DAE, DAET, DAE1, DA2, DXE2, DX2, DX44
19	36101-ZE9-L30	CORD, STOP SWITCH.....	1	-----	DCA
20	36103-ZE1-000	HOLDER, STOP SWITCH CORD.....	1	-----	DA2, DXE2, DX2, DX44
	91504-SL0-003	CLIP, HOOD OPEN WIRE.....	1	-----	DCA
21	46391-VM0-003	CLIP, BRAKE PIPE (A).....	2	-----	DAE, DAET, DAE1, DA2, DN, DNE, DNE4, DN4, DXE, DXE2, DXE4, DX2, DX44
22	80101-166-000	GROMMET, WIRE CORD.....	2	-----	DAE, DAET, DAE1, DA2, DN, DNE, DNE4, DN4, DXE, DXE2, DXE4, DX2, DX44

Ref. No.	Part No.	Description	Reqd. No. GXV 390X1	Serial No.	Type
23	90006-ZF5-V00	SCREW, SPECIAL, 6X8.....	2	-----	DCA
24	90013-883-000	BOLT, FLANGE, 6X12.....	2	-----	DCA
25	90015-883-000	BOLT, FLANGE, 6X28.....	2		
26	90029-888-000	BOLT, FLANGE, 6X16.....	4		
27	94050-06000	NUT, FLANGE, 6MM.....	4	-----	DAE, DAET, DAE1, DA2, DN, DNE, DNE4, DN4, DXE, DXE2, DXE4, DX2, DX44
			2	-----	DCA
28	95701-06032-00	BOLT, FLANGE, 6X32.....	1	-----	DAE, DAET
29	95701-08020-08	BOLT, FLANGE, 8X20.....	2	-----	DA2, DN, DN4, DX2

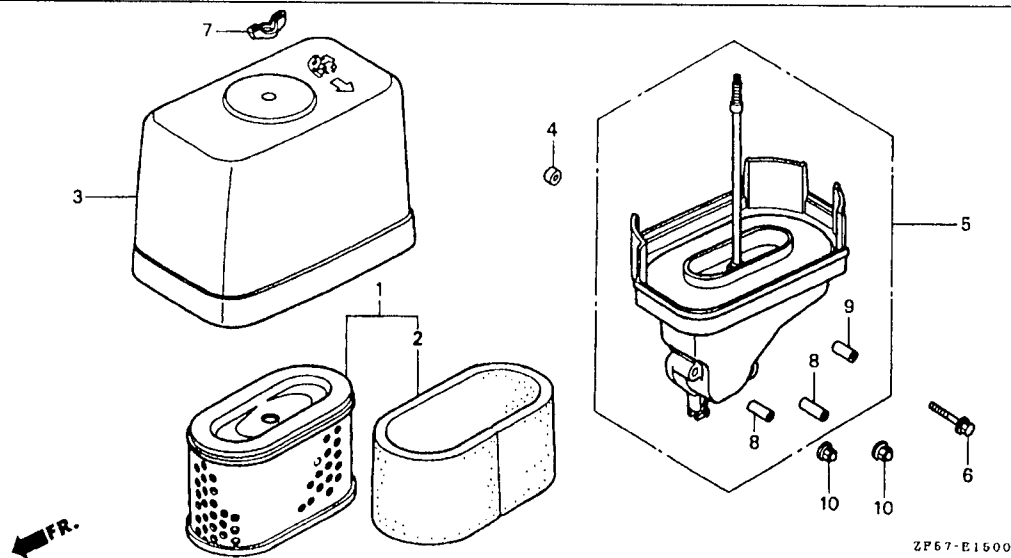


C 11

## Carburetor

E - 14

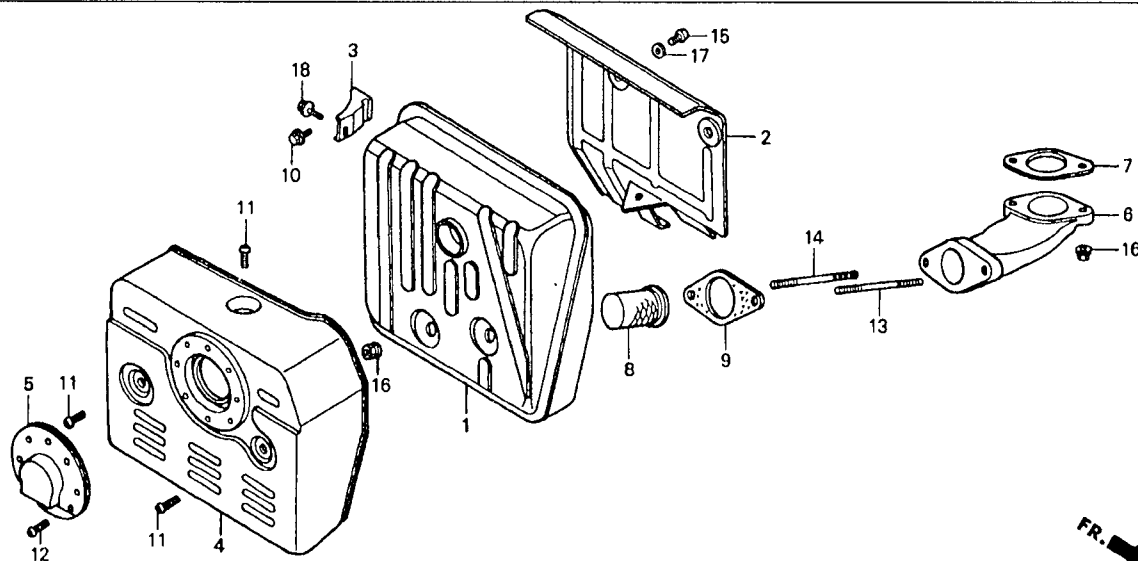
Ref. No.	Part No.	Description	Reqd. No. GXV 390X1	Serial No.	Type
22	16957-ZE1-812	PACKING, FUEL COCK.....	1		
23	19651-ZF5-L00	GUIDE, AIR.....	1	-----	DCA
24	93500-03006-1H	SCREW, PAN, 3X6.....	2	-----	DCA
	93500-03008-1G	SCREW, PAN, 3X8.....	2	-----	DAE, DAET, DAE1, DA2, DN, DNE, DNE4, DN4, DXE, DXE2, DXE4, DX2, DX44
25	95002-02080	CLIP, TUBE (B8).....	1		
26	99101-ZH7-0920	JET, MAIN, #92.....	1		
	99101-ZH7-0880	JET, MAIN, #88.....	(1)		
	99101-ZH7-0900	JET, MAIN, #90.....	(1)		
27	99204-ZE2-0400	JET SET, PILOT, #40.....	1		



Service Item F.R.T.

ELEMENT, AIR CLEANER..... 0.1  
 .FILTER, OUTER  
 .ELBOW COMP., AIR CLEANER

Ref. No.	Part No.	Description	Reqd. No. GXV 390KI	Serial No.	Type
1	17211-ZF5-V00	ELEMENT, AIR CLEANER.....	1		
2	17218-ZF5-V00	FILTER, OUTER.....	1		
3	17231-ZF5-V00	COVER, AIR CLEANER.....	1		
4	17239-ZE8-700	SPACER, AIR CLEANER ELBOW.....	1		DCA
5	17410-ZF5-V00	ELBOW COMP., AIR CLEANER.....	1		
6	90014-ZE6-000	BOLT, FLANGE, 6X35.....	2		DAE, DAET, DAE1, DA2, DN, DNE, DNE4, DN4, DXE, DXE2, DXE4, DX2, DX44
	90016-ZE8-000	BOLT, FLANGE, 6X45 (CT200)....	1		DCA
7	90201-ZF5-V00	NUT, WING, 6MM.....	1		
8	91502-ZF5-V00	COLLAR, AIR CLEANER.....	2		
9	91503-ZF5-V00	COLLAR, AIR CLEANER.....	1		
10	94050-06000	NUT, FLANGE, 6MM.....	2		



ZF57-B1600

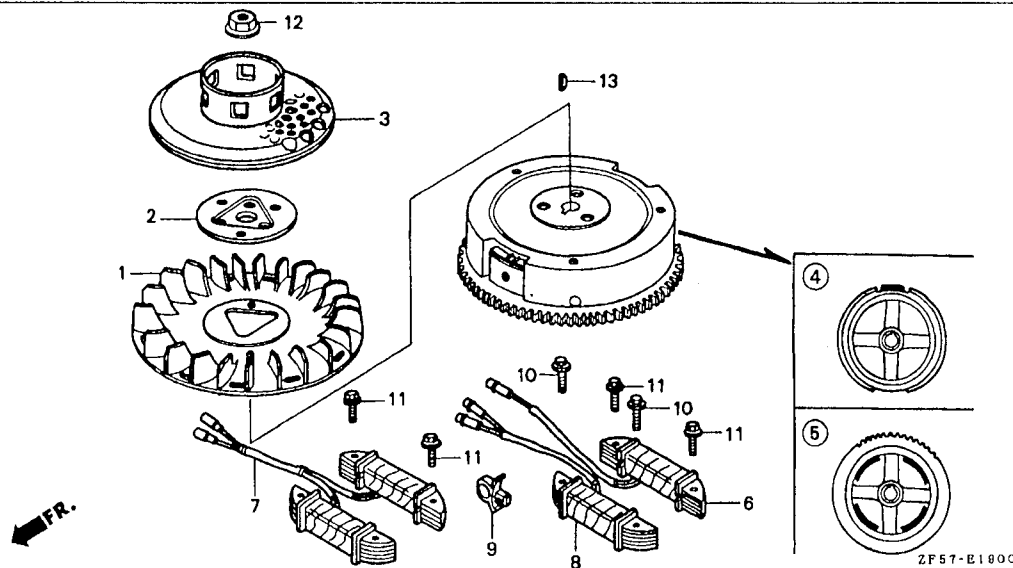
ZF57E1400

Service Item	F.R.T.
MUFFLER COMP.....	0.3
.SEPARATOR, MUFFLER	
.PIPE, EX.	
.ARRESTER, SPARK	
PROTECTOR, MUFFLER.....	0.1
.BOLT, STUD, 8X60 (ADD 0.1 FOR EACH.)	
GASKET, EX. PIPE.....	0.2

Ref. No.	Part No.	Description	Reqd. No. GXV 390KI	Serial No.	Type
1	18310-ZE9-003	MUFFLER COMP.....	1	-----	DAE, DAET, DAE1, DA2, DN, DNE, DNE4, DN4, DXE, DXE2, DXE4, DX2, DX44
2	18316-ZF5-V00	SEPARATOR, MUFFLER.....	1	-----	DAE, DAET, DAE1, DA2, DN, DNE, DNE4, DN4, DXE, DXE2, DXE4, DX2, DX44
3	18318-ZE8-000	STAY COMP., MUFFLER.....	1	-----	DAE, DAET, DAE1, DA2, DN, DNE, DNE4, DN4, DXE, DXE2, DXE4, DX2, DX44
4	18321-ZF5-000	PROTECTOR, MUFFLER.....	1	-----	DAE, DAET, DAE1, DA2, DN, DNE, DNE4, DN4, DXE, DXE2, DXE4, DX2, DX44
5	18331-ZE2-810	CAP, MUFFLER.....	1	-----	DAE, DAET, DAE1, DA2, DXE, DXE2, DXE4, DX2, DX44
6	18331-ZF5-000	PIPE, EX.....	1	-----	
7	18333-ZE3-800	GASKET, EX. PIPE.....	1	-----	
8	18335-ZE8-000	ARRESTER, SPARK.....	1	-----	DXE, DXE2, DXE4, DX2, DX44
9	18382-ZE9-800	GASKET, EX. PIPE.....	1	-----	
10	90031-883-000	BOLT, FLANGE, 8X16.....	1	-----	DAE, DAET, DAE1, DA2, DN, DNE, DNE4, DN4, DXE, DXE2, DXE4, DX2, DX44
11	90050-ZE1-000	SCREW, TAPPING, 5X8.....	3	-----	DAE, DAET, DAE1, DA2, DN, DNE, DNE4, DN4, DXE, DXE2, DXE4, DX2, DX44
12	90055-ZE1-000	SCREW, TAPPING, 4X6.....	3	-----	DAE, DAET, DAE1, DA2, DXE, DXE2, DXE4, DX2, DX44
13	92900-08060-1B	BOLT, STUD, 8X60.....	1	-----	DAE, DAET, DAE1, DA2, DN, DNE, DNE4, DN4, DXE, DXE2, DXE4, DX2, DX44
14	92900-08070-1B	BOLT, STUD, 8X70.....	1	-----	DAE, DAET, DAE1, DA2, DN, DNE, DNE4, DN4, DXE, DXE2, DXE4, DX2, DX44
15	93500-06006-0A	SCREW, PAN, 6X6.....	3	-----	DAE, DAET, DAE1, DA2, DN, DNE, DNE4, DN4, DXE, DXE2, DXE4, DX2, DX44
16	94050-08000	NUT, FLANGE, 8MM.....	4	-----	DAE, DAET, DAE1, DA2, DN, DNE, DNE4, DN4, DXE, DXE2, DXE4, DX2, DX44
			2	-----	DCA
17	94101-06000	WASHER, PLAIN, 6MM.....	3	-----	DAE, DAET, DAE1, DA2, DN, DNE, DNE4, DN4, DXE, DXE2, DXE4, DX2, DX44
18	95701-08014-00	BOLT, FLANGE, 8X14.....	1	-----	DAE, DAET, DAE1, DA2, DN, DNE, DNE4, DN4, DXE, DXE2, DXE4, DX2, DX44







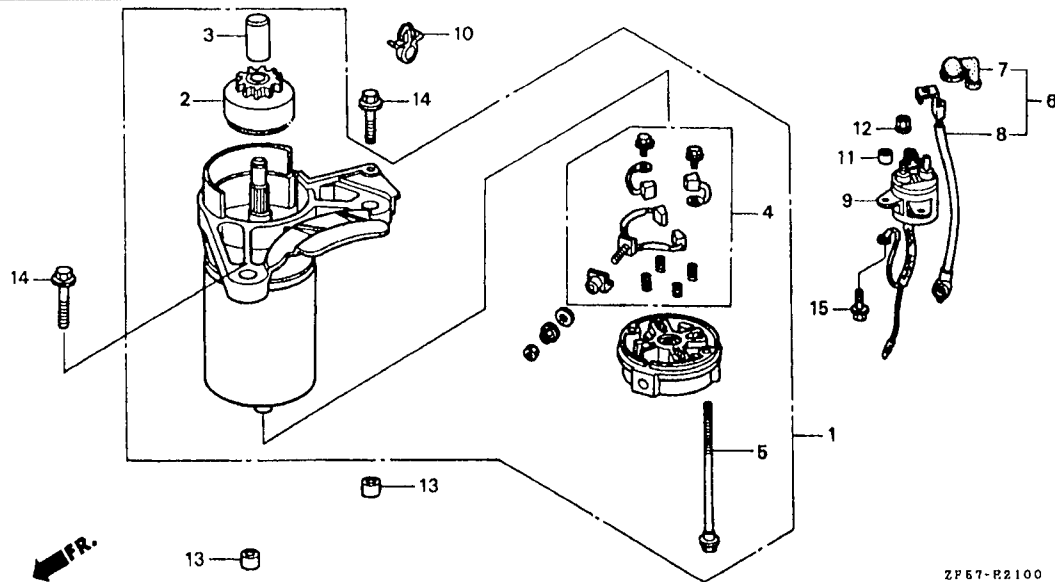
Service Item	F.R.T.
FAN, COOLING.....	0.2
.PULLEY COMP., STARTER	
FLYWHEEL COMP.....	0.3
.COIL ASSY., LAMP	
COIL ASSY., CHARGE.....	0.4

Ref. No.	Part No.	Description	Reqd. No. GXV 399K1	Serial No.	Type
1	19511-ZE9-010	FAN, COOLING.....	1		
2	19512-ZE2-000	PLATE, COOLING FAN SETTING....	1	-----	DCA
3	28450-ZE9-004	PULLEY COMP., STARTER (SCREEN GRID)	1	-----	DAE, DAET, DAE1, DA2, DN, DNE, DNE4, DN4, DXE, DXE2, DXE4, DX2, DX44
4	31100-ZE9-010	FLYWHEEL COMP.....	1	-----	DA2, DN, DN4, DX2
5	31110-ZF5-L31	FLYWHEEL COMP. (SEL-4POLE)....	1	-----	DAE, DAET, DAE1, DCA, DNE, DNE4, DXE, DXE2, DXE4, DX44
6	31510-ZF5-811	COIL ASSY., LAMP (12V70W)....	1	-----	DXE, DXE2, DXE4, DX44
7	31630-ZF5-V01	COIL ASSY., CHARGE.....	1	-----	DAE1, DCA
8	31630-ZF5-003	COIL ASSY., CHARGE.....	1	-----	DAE, DAET
	31630-ZF5-801	COIL ASSY., CHARGE (1A CHG)...	1	-----	DNE, DNE4, DXE, DXE2, DXE4, DX44
9	46391-VM0-003	CLIP, BRAKE PIPE (A).....	1	-----	DAE, DAET, DAE1, DA2, DN, DNE, DNE4, DN4, DXE, DXE2, DXE4, DX2, DX44
10	90015-883-000	BOLT, FLANGE, 6X28.....	2	-----	DAE, DAET, DA2, DN, DNE, DNE4, DN4, DXE, DXE2, DXE4, DX2, DX44
11	90031-ZE1-000	BOLT, FLANGE, 6X32.....	4	-----	DAE1, DCA
			2	-----	DXE, DXE2, DXE4, DX44
12	90201-ZE3-790	NUT, SPECIAL, 16MM.....	1		
13	90741-ZE2-000	KEY, SPECIAL WOODRUFF, 25X18..	1		

C 16

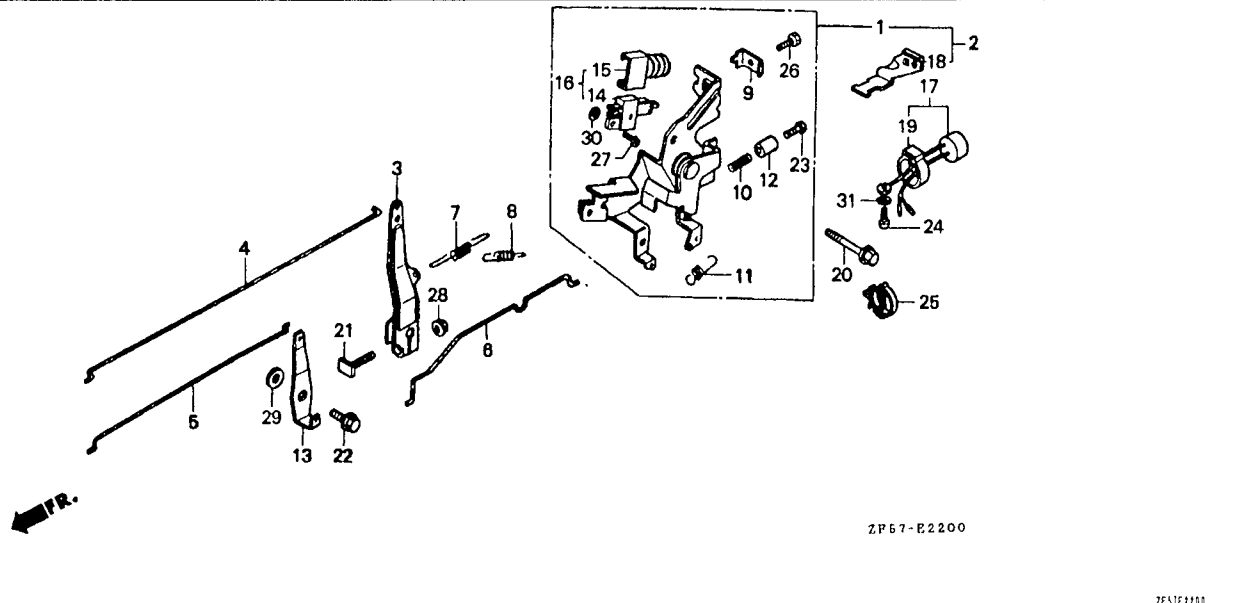
Starter motor

E - 21



Service Item	F.R.T.
MOTOR ASSY., STARTER.....	0.3
.SWITCH ASSY., STARTER MAGNETIC	
DRIVE ASSY.....	0.4
BRUSH SET.....	0.5
CORD, MAGNET SWITCH.....	0.1

Ref. No.	Part No.	Description	Reqd. No. GXV 390K1	Serial No.	Type
1	31200-ZF5-L32	MOTOR ASSY., STARTER.....	1	-----	DAE, DAET, DAE1, DCA, DNE, DNE4, DXE, DXE2, DXE4, DX44
2	31206-ZF5-L31	DRIVE ASSY.....	1	-----	DAE, DAET, DAE1, DCA, DNE, DNE4, DXE, DXE2, DXE4, DX44
3	31225-ZF5-L31	STOPPER SET, PINION.....	1	-----	DAE, DAET, DAE1, DCA, DNE, DNE4, DXE, DXE2, DXE4, DX44
4	31226-ZF5-L31	BRUSH SET.....	1	-----	DAE, DAET, DAE1, DCA, DNE, DNE4, DXE, DXE2, DXE4, DX44
5	31261-ZF5-L31	BOLT, THROUGH.....	2	-----	DAE, DAET, DAE1, DCA, DNE, DNE4, DXE, DXE2, DXE4, DX44
6	32402-ZF5-V00	CORD, MAGNET SWITCH.....	1	-----	DAE, DAET, DAE1, DCA, DNE, DNE4, DXE, DXE2, DXE4, DX44
7	32411-ZV4-811	COVER, STARTER TERMINAL.....	1	-----	DAE, DAET, DAE1, DCA, DNE, DNE4, DXE, DXE2, DXE4, DX44
8	32412-ZV4-811	COVER, MAGNETIC SWITCH			
9	35850-ZF5-V01	SWITCH ASSY., STARTER MAGNETIC	1	-----	DAE, DAET, DAE1, DCA, DNE, DNE4, DXE, DXE2, DXE4, DX44
10	90682-735-A01	CLIP, WIRE HARNESS.....	1	-----	DAE1, DCA
11	91504-ZF5-V00	COLLAR, DISTANCE.....	2	-----	DAE, DAET, DAE1, DCA, DNE, DNE4, DXE, DXE2, DXE4, DX44
12	94070-06080	NUT-WASHER, 6MM.....	2	-----	DAE, DAET, DAE1, DCA, DNE, DNE4, DXE, DXE2, DXE4, DX44
13	94301-10120	PIN, DOWEL, 10X12.....	2	-----	DAE, DAET, DAE1, DCA, DNE, DNE4, DXE, DXE2, DXE4, DX44
14	95701-08035-00	BOLT, FLANGE, 8X35.....	2	-----	DAE, DAET, DAE1, DCA, DNE, DNE4, DXE, DXE2, DXE4, DX44
15	96001-06025-00	BOLT, FLANGE, 6X25.....	2	-----	DAE, DAET, DAE1, DCA, DNE, DNE4, DXE, DXE2, DXE4, DX44

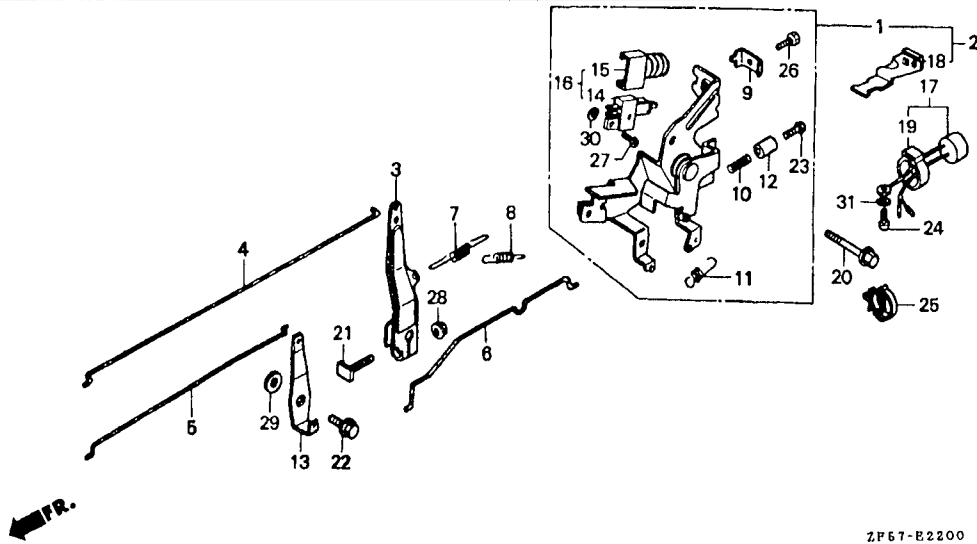


Service Item	F.R.T.
CONTROL ASSY.....	0.2
.ARM, GOVERNOR	
.ROD, GOVERNOR	
.ROD, CHOKE	
.ROD, JOINT	
.SWITCH ASSY., ENGINE	
.SWITCH ASSY., ENGINE STOP	
.BUZZER ASSY.	

Ref. No.	Part No.	Description	Reqd. No. GXV 390K1	Serial No.	Type
1	16500-ZF5-010	CONTROL ASSY.....	1	-----	DAE, DAET, DAE1, DN, DNE, DXE
	16500-ZF5-821	CONTROL ASSY. (EN).....	1	-----	DNE4, DN4, DXE4
2	16500-ZF5-800	CONTROL ASSY.....	1	-----	DA2, DXE2, DX2
	16500-ZF5-830	CONTROL ASSY. (EN) (ALT).....	1	-----	DX44
3	16551-ZF5-000	ARM, GOVERNOR.....	1	-----	DAE, DAET, DAE1, DA2, DN, DNE, DNE4, DN4, DXE, DXE2, DXE4, DX2, DX44
4	16555-ZE9-000	ROD, GOVERNOR.....	1	-----	DAE, DAET, DAE1, DA2, DN, DNE, DNE4, DN4, DXE, DXE2, DXE4, DX2, DX44
5	16556-ZE9-000	ROD, CHOKE.....	1	-----	DAE, DAET, DAE1, DA2, DN, DNE, DNE4, DN4, DXE, DXE2, DXE4, DX2, DX44
6	16557-ZE8-810	ROD, JOINT.....	1	-----	DAE, DAET, DAE1, DA2, DN, DNE, DNE4, DN4, DXE, DXE2, DXE4, DX2, DX44
7	16561-ZF5-000	SPRING, GOVERNOR.....	1	-----	DAE, DAET, DAE1, DA2, DN, DNE, DNE4, DN4, DXE, DXE2, DXE4, DX2, DX44
8	16563-ZE8-000	SPRING, GOVERNOR PRIMARY.....	1	-----	DAE, DAET, DAE1, DA2, DN, DNE, DNE4, DN4, DXE, DXE2, DXE4, DX2, DX44
9	16576-891-000	HOLDER, CABLE.....	1	-----	DAE, DAET, DAE1, DA2, DN, DNE, DNE4, DN4, DXE, DXE2, DXE4, DX2, DX44
10	16584-883-300	SPRING, CONTROL ADJUSTING.....	1	-----	DAE, DAET, DAE1, DA2, DN, DNE, DNE4, DN4, DXE, DXE2, DXE4, DX2, DX44
11	16592-732-700	SPRING, CABLE RETURN.....	1	-----	DAE, DAET, DAE1, DA2, DN, DNE, DNE4, DN4, DXE, DXE2, DXE4, DX2, DX44
12	16599-ZG1-M10	COLLAR, STOPPER.....	1	-----	DNE4, DN4, DXE4, DX44
13	16619-ZF5-000	LEVER, CHOKE JOINT.....	1	-----	DAE, DAET, DAE1, DA2, DN, DNE, DNE4, DN4, DXE, DXE2, DXE4, DX2, DX44
14	35330-ZG1-751	SWITCH ASSY., ENGINE.....	1	-----	DAE, DAET, DAE1, DA2, DN, DNE, DNE4, DN4, DXE, DXE2, DXE4, DX2, DX44
15	35336-750-003	COVER, SWITCH.....	1	-----	DAE, DAET, DAE1, DA2, DN, DNE, DNE4, DN4, DXE, DXE2, DXE4, DX2, DX44
16	36100-ZE8-003	SWITCH ASSY., ENGINE STOP.....	1	-----	DAE, DAET, DAE1, DA2, DN, DNE, DNE4, DN4, DXE, DXE2, DXE4, DX2, DX44
17	38400-ZE8-003	BUZZER ASSY.....	1	-----	DA2, DXE2, DX2, DX44
18	38401-ZF5-800	STAY, BUZZER.....	1	-----	DA2, DXE2, DX2, DX44
19	38402-GC1-000	SUSPENSION, AUDIBLE PILOT.....	1	-----	DA2, DXE2, DX2, DX44
20	90013-883-000	BOLT, FLANGE, 6X12.....	1	-----	DAE, DAET, DAE1, DA2, DN, DNE, DNE4, DN4, DXE, DXE2, DXE4, DX2, DX44
21	90015-ZE5-010	BOLT, GOVERNOR ARM.....	1	-----	DAE, DAET, DAE1, DA2, DN, DNE, DNE4, DN4, DXE, DXE2, DXE4, DX2, DX44
22	90015-ZE8-000	BOLT, FLANGE, 6MM.....	1	-----	DAE, DAET, DAE1, DA2, DN, DNE, DNE4, DN4, DXE, DXE2, DXE4, DX2, DX44
23	90016-ZF5-W40	SCREW, RECESSED, 5X20.....	1	-----	DNE4, DN4, DXE4, DX44

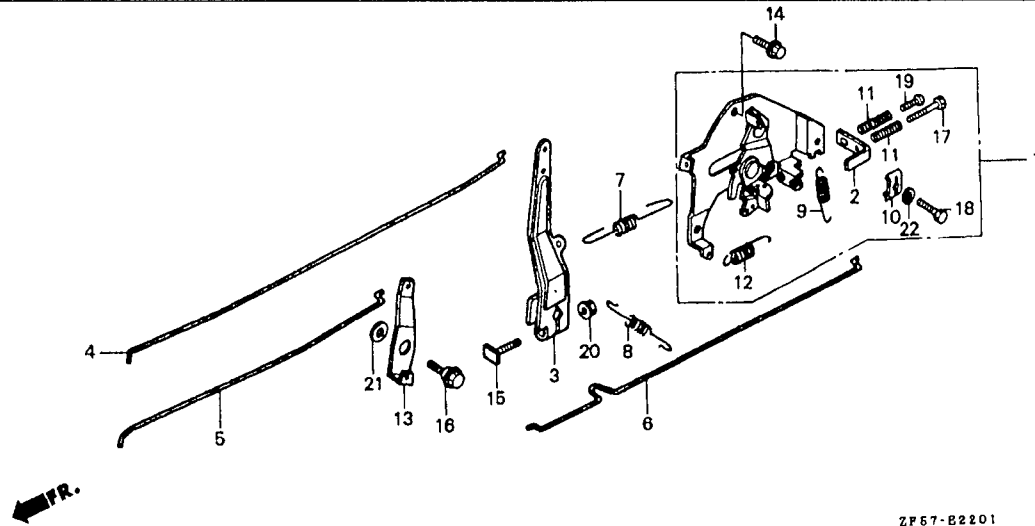


Service Item F.R.T.



ZF51E2200

Ref. No.	Part No.	Description	Reqd. No. GXV 398K1	Serial No.	Type
23)	93500-05020-0A	SCREW, PAN, 5X20.....	1	-----	DAE, DAET, DAE1, DA2, DN, DNE, DXE, DXE2, DX2
24	90050-ZE1-000	SCREW, TAPPING, 5X8.....	1	-----	DA2, DXE2, DX2, DX44
25	90684-ZA0-601	CLIP, HARNESS.....	1	-----	DA2, DXE2, DX2, DX44
26	92301-05014-1A	BOLT, RECESSED, 5X14.....	1	-----	DAE, DAET, DAE1, DN, DNE, DNE4, DN4, DXE, DXE4
	92301-05016-0A	BOLT, RECESSED, 5X16.....	1	-----	DA2, DXE2, DX2, DX44
27	93500-04014-0A	SCREW, PAN, 4X14.....	1	-----	DAE, DAET, DAE1, DA2, DN, DNE, DNE4, DN4, DXE, DXE2, DXE4, DX2, DX44
28	94050-06000	NUT, FLANGE, 6MM.....	1	-----	DAE, DAET, DAE1, DA2, DN, DNE, DNE4, DN4, DXE, DXE2, DXE4, DX2, DX44
29	94101-06800	WASHER, PLAIN, 6MM.....	1	-----	DAE, DAET, DAE1, DA2, DN, DNE, DNE4, DN4, DXE, DXE2, DXE4, DX2, DX44
30	94111-04000	WASHER, SPRING, 4MM.....	1	-----	DAE, DAET, DAE1, DA2, DN, DNE, DNE4, DN4, DXE, DXE2, DXE4, DX2, DX44
31	94111-05000	WASHER, SPRING, 5MM.....	1	-----	DA2, DXE2, DX2, DX44



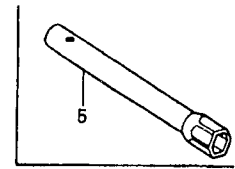
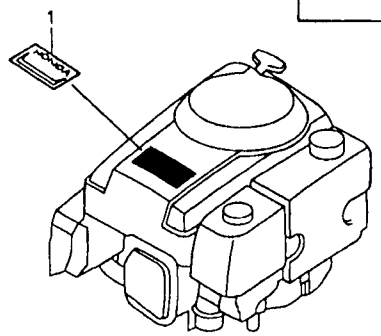
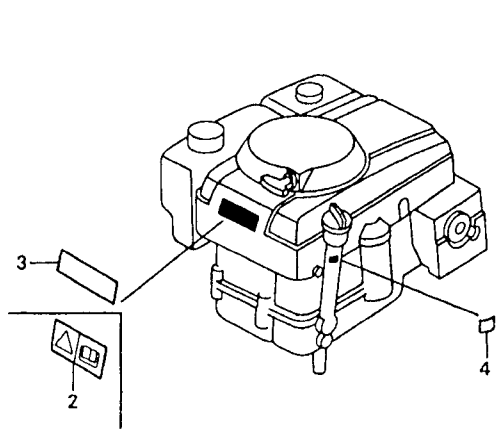
Service Item	F.R.T.
CONTROL ASSY.....	0.2
.ARM, GOVERNOR	
.ROD, GOVERNOR	
.ROD, CHOKE	
.ROD, JOINT	
.SPRING, GOVERNOR	
SPRING, GOVERNOR PRIMARY.....	0.1
.SPRING, CABLE RETURN	

ZF57-B2201

ZF57E101

Ref. No.	Part No.	Description	Reqd. No. GXV 390K1	Serial No.	Type
1	16500-ZF5-U20	CONTROL ASSY. (EN).....	1	-----	DCA
2	16539-ZF5-L40	PLATE, SCREW ADJUST GUARD.....	1	-----	DCA
3	16551-ZF5-000	ARM, GOVERNOR.....	1	-----	DCA
4	16555-ZE9-000	ROD, GOVERNOR.....	1	-----	DCA
5	16556-ZE9-000	ROD, CHOKE.....	1	-----	DCA
6	16557-ZE8-000	ROD, JOINT.....	1	-----	DCA
7	16561-ZF5-000	SPRING, GOVERNOR.....	1	-----	DCA
8	16563-ZE8-000	SPRING, GOVERNOR PRIMARY.....	1	-----	DCA
9	16574-ZF5-L00	SPRING, LEVER.....	1	-----	DCA
10	16576-891-000	HOLDER, CABLE.....	1	-----	DCA
11	16584-883-300	SPRING, CONTROL ADJUSTING.....	2	-----	DCA
12	16592-732-700	SPRING, CABLE RETURN.....	1	-----	DCA
13	16619-ZF5-000	LEVER, CHOKE JOINT.....	1	-----	DCA
14	90013-883-000	BOLT, FLANGE, 6X12.....	1	-----	DCA
15	90015-ZE5-010	BOLT, GOVERNOR ARM.....	1	-----	DCA
16	90015-ZE8-000	BOLT, FLANGE, 6MM.....	1	-----	DCA
17	90016-ZG1-M10	SCREW, RECESSED, 5X35.....	1	-----	DCA
18	92301-05016-0A	BOLT, RECESSED, 5X16.....	1	-----	DCA
19	92301-05022-0A	BOLT, RECESSED, 5X22.....	1	-----	DCA
20	94050-06000	NUT, FLANGE, 6MM.....	1	-----	DCA
21	94101-06800	WASHER, PLAIN, 6MM.....	1	-----	DCA

Service Item F.R.T.



ZF57-E2800

ZF57E1111

Ref. No.	Part No.	Description	Reqd. No. GXV 390K1	Serial No.	Type
1	87101-ZF5-V00	MARK, TOP COVER EMBLEM (13.0).	1		
2	87516-VA9-B50	MARK, OPERATOR CAUTION.....	1		DCA, DNE4, DN4, DXE4, DX44
3	87522-ZF5-V00	LABEL, CAUTION.....	1		DAE, DAET, DAE1, DA2, DN, DNE, DXE, DXE2, DX2
4	87601-ZF5-V00	MARK, TYPE (DN).....	1		DN
	87601-ZF5-V10	MARK, TYPE (DNE).....	1		DNE
	87601-ZF5-V20	MARK, TYPE (DXE).....	1		DXE
	87601-ZF5-V30	MARK, TYPE (DAE).....	1		DAE
	87601-ZF5-V40	MARK, TYPE (DAET).....	1		DAET
	87601-ZF5-V50	MARK, TYPE (DX2).....	1		DX2
	87601-ZF5-V60	MARK, TYPE (DXE2).....	1		DXE2
	87601-ZF5-V70	MARK, TYPE (DA2).....	1		DA2
	87601-ZF5-W40	MARK, TYPE (DN4).....	1		DN4
	87601-ZF5-W50	MARK, TYPE (DNE4).....	1		DNE4
	87601-ZF5-W60	MARK, TYPE (DXE4).....	1		DXE4
	87601-ZF5-W70	MARK, TYPE (DX44).....	1		DX44
	87601-ZF5-W80	MARK, TYPE (DAE1).....	1		DAE1
	87601-ZF5-800	MARK, TYPE (DCA).....	1		DCA
5	99004-21002	WRENCH, BOX (P21).....	1		DAE, DAET, DAE1, DA2, DCA, DXE, DXE2, DXE4, DX2, DX44

Address Page			Address Page			Address Page			Address Page			Address Page			Address Page		
Part No.	No.	No.	Part No.	No.	No.	Part No.	No.	No.	Part No.	No.	No.	Part No.	No.	No.	Part No.	No.	No.
06000			14751-ZE2-003	C6	14	16551-ZF5-000	D1	25	18345-ZF5-020	C1	9	31717-ZF5-V00	C8	16	87601-ZF5-W70	D4	28
			14771-ZE2-000	C6	14		D3	27	18347-ZE8-000	C1	9				87601-ZF5-W80	D4	28
06165-ZE3-000	C2	10	14773-ZE2-000	C6	14	16555-ZE9-000	D1	25	18382-ZE9-800	C13	21	32000			87601-ZF5-800	D4	28
			14775-ZE2-010	C6	14		D3	27									
11000			14781-ZE2-000	C6	14	16556-ZE9-000	D1	25	19000			32110-ZB5-G30	C8	16	90000		
			14791-ZE9-000	C6	14		D3	27				32161-404-610	C8	16			
11300-ZF5-W22	C2	10				16557-ZE8-000	D3	27	19511-ZE9-010	C15	23	32402-ZF5-V00	C16	24	90001-ZE8-000	C5	13
11300-ZF5-W32	C2	10	15000			16557-ZE8-810	D1	25	19512-ZE2-000	C15	23	32411-ZV4-811	C16	24	90003-ZF5-003	C1	9
11381-ZE9-800	C2	10				16561-ZF5-000	D1	25	19610-ZE9-V00	C8	16	32412-ZV4-811	C16	24	90004-ZE2-W01	C7	15
			15130-ZE8-000	C2	10		D3	27	19610-ZF5-V10	C8	16				90006-ZF5-V00	C9	17
12000			15131-ZE9-003	C2	10	16563-ZE8-000	D1	25	19610-ZF5-V20	C8	16	35000			90012-ZE0-010	C6	14
			15330-ZE8-000	C2	10		D3	27	19612-ZF5-010	C8	16				90013-883-000	C1	9
12000-ZF5-030	C2	10	15332-891-003	C2	10	16574-ZF5-L00	D3	27	19617-ZE9-V00	C8	16	35330-ZG1-751	D1	25		C3	11
12200-ZF5-000	C1	9	15334-ZE8-010	C2	10	16576-891-000	D1	25	19617-ZF5-V00	C8	16	35336-750-003	D1	25		C9	17
12204-ZE2-306	C1	9	15334-ZE8-811	C2	10		D3	27	19627-ZE9-V00	C8	16	35410-ZF5-003	C3	11		D1	25
12205-ZE2-305	C1	9	15335-ZE9-000	C2	10	16584-883-300	D1	25	19631-ZE9-V00	C8	16	35419-ZF5-000	C3	11		D3	27
12209-ZE8-003	C6	14	15336-ZE8-000	C2	10		D3	27	19635-ZE8-702	C8	16	35850-ZF5-V01	C16	24	90014-ZE6-000	C3	11
12216-ZE2-300	C1	9	15337-ZE8-000	C2	10	16592-732-700	D1	25	19651-ZF5-L00	C11	19				C12	20	
12251-ZF5-000	C1	9	15420-ZE8-000	C2	10		D3	27				36000			90014-ZE8-000	C1	9
12310-ZE8-000	C1	9	15421-ZE9-003	C2	10	16599-ZG1-M10	D1	25	28000			36100-ZE8-003	D1	25	90015-ZE5-010	D1	25
12315-ZF5-000	C2	10	15600-ZF5-000	C2	10	16619-ZF5-000	D1	25	28400-ZE3-W01ZA	C7	15	36101-ZE8-000	C8	16		D3	27
12370-ZF5-000	C2	10	15625-ZE8-000	C2	10		D3	27	28410-ZE3-W01ZA	C7	15	36101-ZE8-810	C8	16	90015-ZE8-000	D1	25
12372-ZE2-300	C2	10	15630-ZE8-000	C2	10	16910-ZE8-015	C14	22	28421-ZE3-W01	C7	15	36101-ZE9-L30	C8	16		D3	27
12373-ZE8-000	C2	10				16952-ZE6-000	C14	22	28422-ZE2-W01	C7	15	36103-ZE1-000	C8	16	90015-883-000	C9	17
12375-ZE9-010	C2	10	16000			16953-ZE1-711	C10	18	28443-ZE2-W01	C7	15				C15	23	
12376-ZE8-000	C2	10				16954-ZE1-811	C10	18	28444-ZE2-W01	C7	15				90016-ZE8-000	C12	20
12391-ZE8-000	C1	9	16010-ZE2-015	C10	18	16956-ZE1-811	C10	18	28442-ZE2-W01	C7	15	38000			90016-ZF5-W40	D1	25
			16011-ZA0-931	C10	18	16957-ZE1-812	C11	19	28443-ZE2-W01	C7	15	38400-ZE8-003	D1	25	90016-ZG1-M10	D3	27
13000			16013-ZA0-931	C10	18				28444-ZE2-W01	C7	15	38401-ZF5-800	D1	25	90029-888-000	C9	17
			16015-ZE8-005	C10	18	17000			28445-ZE2-W01	C7	15	38402-GC1-000	D1	25	90031-ZE1-000	C15	23
13010-ZF6-003	C5	13	16016-ZF6-005	C10	18	17211-ZF5-V00	C12	20	28450-ZE9-004	C15	23				90031-883-000	C13	21
13010-ZF6-005	C5	13	16024-ZE1-811	C10	18	17218-ZF5-V00	C12	20	28461-ZE2-W01	C7	15	46000			90042-ZE8-000	C1	9
13011-ZF6-003	C5	13	16028-ZE0-005	C10	18	17231-ZF5-V00	C12	20	28462-ZE3-W01	C7	15	46391-VM0-003	C8	16	90042-ZE8-700	C1	9
13011-ZF6-005	C5	13	16100-ZF5-V31	C10	18	17239-ZE8-700	C12	20	28469-ZE2-W01	C7	15				90050-ZE1-000	C13	21
13012-ZF6-003	C5	13	16100-ZF5-V41	C10	18	17240-ZE6-000	C3	11							D2	26	
13012-ZF6-005	C5	13	16124-ZE0-005	C10	18	17410-ZF5-V00	C12	20	30000						C15	23	
13101-ZF6-W00	C5	13	16148-141-881	C10	18	17510-ZE9-000	C14	22	30500-ZE9-L32	C8	16	80000			90055-ZE1-000	C13	21
13102-ZF6-W00	C5	13	16166-ZF5-V20	C10	18	17512-ZE9-000	C14	22	30700-ZE8-701	C8	16				90201-ZE3-790	C15	23
13103-ZF6-W00	C5	13	16172-ZE3-W10	C10	18	17516-ZE8-000	C14	22	30700-ZF5-013	C8	16	80101-166-000	C8	16	90201-ZF5-V00	C12	20
13111-ZF6-000	C5	13	16199-ZE8-000	C10	18	17516-896-700	C14	22						90206-ZE1-000	C6	14	
13200-ZE9-010	C5	13	16211-ZF5-L00	C10	18	17518-ZE8-000	C14	22	31000					90406-VM6-000	C3	11	
13200-ZE9-315	C5	13	16211-ZF5-003	C10	18	17620-ZE7-000	C14	22				87000		90417-HA0-000	C4	12	
13310-ZF5-030	C4	12	16220-ZA0-702	C10	18	17621-ZE6-000	C14	22	31100-ZE9-010	C15	23	87101-ZF5-V00	D4	28	90441-ZE2-010	C1	9
13351-ZF5-030	C4	12	16221-ZF6-800	C10	18	17622-888-010	C14	22	31110-ZF5-L31	C15	23	87516-VA9-B50	D4	28	90455-896-700	C14	22
13356-ZF5-040	C4	12	16223-ZE9-800	C10	18	17624-ZE7-000	C14	22	31200-ZF5-L32	C16	24	87522-ZF5-V00	D4	28	90471-SB0-000	C14	22
			16500-ZF5-U20	D3	27				31206-ZF5-L31	C16	24	87601-ZF5-V00	D4	28	90601-ZE3-000	C5	13
14000			16500-ZF5-010	D1	25	18000			31225-ZF5-L31	C16	24	87601-ZF5-V10	D4	28	90602-ZE1-000	C3	11
			16500-ZF5-821	D1	25	18310-ZE9-003	C13	21	31226-ZF5-L31	C16	24	87601-ZF5-V20	D4	28	90682-735-A01	C16	24
14100-ZF5-L02	C6	14	16500-ZF5-830	D1	25	18316-ZF5-V00	C13	21	31261-ZF5-L31	C16	24	87601-ZF5-V30	D4	28	90684-ZA0-601	D2	26
14100-ZF5-010	C6	14	16510-ZE3-000	C3	11	18318-ZE8-000	C13	21	31510-ZF5-811	C15	23	87601-ZF5-V40	D4	28	90701-HC4-000	C3	11
14410-ZE3-013	C6	14	16511-ZE8-000	C3	11	18321-ZF5-000	C13	21	31600-ZE2-861	C8	16	87601-ZF5-V50	D4	28	90741-ZE2-000	C15	23
14431-ZE2-000	C6	14	16512-ZE3-000	C3	11	18331-ZE2-810	C13	21	31630-ZF5-V01	C15	23	87601-ZF5-V60	D4	28			
14441-ZE2-000	C6	14	16513-ZE2-000	C3	11	18331-ZF5-000	C13	21	31630-ZF5-003	C15	23	87601-ZF5-V70	D4	28	91000		
14451-ZE1-013	C6	14	16531-ZE2-000	C3	11	18331-ZF5-000	C13	21	31630-ZF5-801	C15	23	87601-ZF5-W40	D4	28	91001-ZF5-003	C3	11
14568-ZE1-000	C6	14	16539-ZF5-L40	D3	27	18333-ZE3-800	C13	21	31700-ZE8-003	C8	16	87601-ZF5-W50	D4	28	91201-ZE3-004	C3	11
14711-ZE3-000	C6	14	16541-ZE8-010	C3	11	18335-ZE8-000	C13	21	31700-ZF5-003	C8	16	87601-ZF5-W60	D4	28	91203-952-771	C3	11
14721-ZE3-000	C6	14												91301-ZE9-003	C3	11	



Address Page			Address Page			Address Page			Address Page			Address Page		
Part No.	No.	No.	Part No.	No.	No.	Part No.	No.	No.	Part No.	No.	No.	Part No.	No.	No.
91302-ZE9-003	C3	11	95701-06025-00	C3	11									
91501-ZF5-000	C3	11	95701-06032-00	C9	17									
91502-ZF5-V00	C12	20	95701-08014-00	C13	21									
91503-ZF5-V00	C12	20	95701-08020-08	C9	17									
91504-SL0-003	C8	16	95701-08035-00	C16	24									
91504-ZF5-V00	C16	24	95701-08040-08	C3	11									
			95701-08060-08	C3	11									
92000			95701-08095-00	C14	22									
92301-05014-1A	D2	26	96000											
92301-05016-0A	D2	26												
	D3	27	96001-06025-00	C16	24									
92301-05022-0A	D3	27	96100-62073-00	C3	11									
92800-20000	C3	11		C4	12									
92900-08032-0B	C1	9												
92900-08060-1B	C13	21	98000											
92900-08070-1B	C13	21												
			98079-55846	C1	9									
93000														
			99000											
93500-03006-1H	C11	19	99004-21002	D4	28									
93500-03008-1G	C11	19	99101-ZH7-0880	C11	19									
93500-04014-0A	D2	26	99101-ZH7-0900	C11	19									
93500-05020-0A	D2	26	99101-ZH7-0920	C11	19									
93500-06006-0A	C13	21	99204-ZE2-0400	C11	19									
94000														
94050-06000	C9	17												
	C12	20												
	D2	26												
	D3	27												
94050-08000	C13	21												
94070-06080	C16	24												
94101-06000	C13	21												
94101-06800	C3	11												
	D2	26												
	D3	27												
94103-06700	C3	11												
94109-20000	C3	11												
94111-04000	D2	26												
94111-05000	D2	26												
94251-10000	C3	11												
94301-10120	C16	24												
94301-12200	C1	9												
95000														
95001-45180-30	C10	18												
95001-45360-20	C14	22												
95002-02080	C11	19												
	C14	22												
95002-40850-08	C14	22												
95002-70000	C14	22												
95701-06012-00	C1	9												
	C3	11												
95701-06016-00	C3	11												

PART NAME INDEX

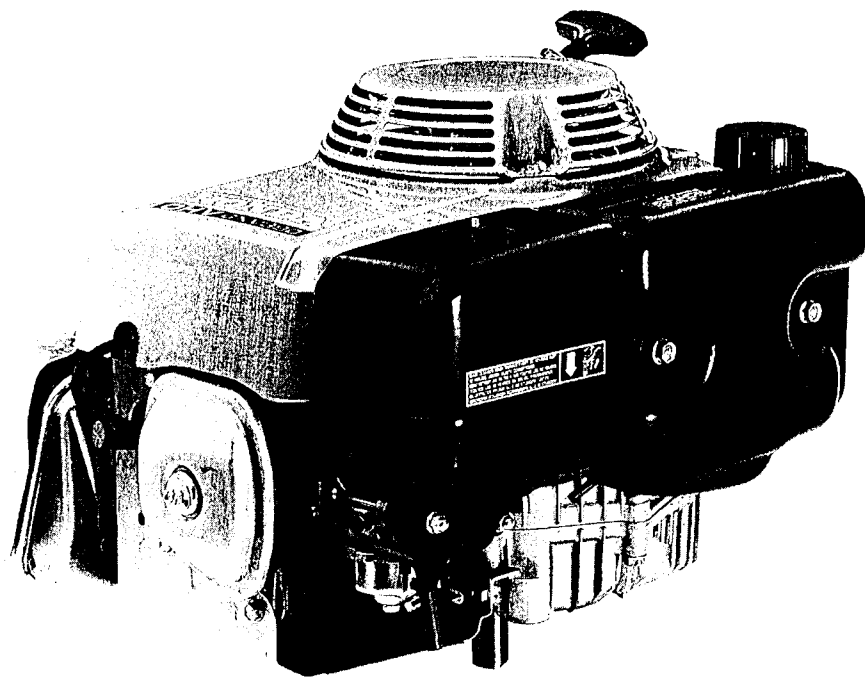
Part name	Address No.	Page No.	Ref. No.	Part name	Address No.	Page No.	Ref. No.	Part name	Address No.	Page No.	Ref. No.
[ A ]				[ C ]				[ D ]			
ARM, GOVERNOR	D1	25	3	BOLT, STUD, 8X60	C13	21	13	COVER, HEAD	C1	9	6
	D3	27	3	BOLT, STUD, 8X70	C13	21	14	COVER, MAGNETIC SWITCH			
ARM, VALVE ROCKER	C6	14	4	BOLT, THROUGH	C16	24	5	COVER, OIL PUMP	C16	24	8
ARRESTER, SPARK	C13	21	8	BRACKET, FAN COVER	C8	16	4	COVER, STARTER TERMINAL	C2	10	11
				BRACKET, L. FAN COVER	C8	16	5	COVER, SWITCH	C16	24	7
				BRACKET, R. FAN COVER	C8	16	3	COVER, UNDER	D1	25	15
				BRACKET, RECTIFIER	C8	16	14	COVER, UNDER	C1	9	8
				BRUSH SET	C16	24	4	CRANKSHAFT COMP.	C4	12	1
				Buzzer Assy.	D1	25	17				
[ B ]				[ E ]				[ F ]			
BAND B1, WIRE	C8	16	16	CAMSHAFT ASSY.	C6	14	2	DRIVE ASSY.	C16	24	2
BARREL ASSY., CYLINDER	C2	10	4	CAP ASSY., FUEL TANK	C14	22	8				
BEARING, RADIAL BALL, 6202	C3	11	39	CAP ASSY., NOISE SUPPRESSOR	C8	16	9				
BEARING, RADIAL BALL, 6207	C3	11	55								
	C4	12	5	CAP ASSY., OIL FILLER	C2	10	22	ELBOW COMP., AIR CLEANER	C12	20	5
BODY, FUEL CAP	C14	22	9	CAP, BREATHER CHAMBER	C2	10	6	ELEMENT, AIR CLEANER	C12	20	1
BOLT, CONNECTING ROD	C5	13	5	CAP, CHOKE DUST	C10	18	10	EXTENSION, OIL FILLER	C2	10	24
BOLT, DRAIN PLUG, 20MM	C3	11	45	CAP, MUFFLER	C13	21	5				
BOLT, FLANGE, 10X85	C1	9	10	CARBURETOR ASSY.	C10	18	8				
BOLT, FLANGE, 6MM	D1	25	22	CASE COMP., RECOIL STARTER	C7	15	2				
	D3	27	16	CHAMBER SET, FLOAT	C10	18	4				
BOLT, FLANGE, 6X12	C1	9	11	CLAMP, TUBE	C14	22	16	FAN, COOLING	C15	23	1
				CLIP, BRAKE PIPE	C8	16	21	FILTER, OUTER	C12	20	2
	C3	11	34		C15	23	9	FLOAT SET	C10	18	3
				CLIP, GOVERNOR HOLDER	C3	11	37	FLYWHEEL COMP.	C15	23	4
	C9	17	24	CLIP, HARNESS	D2	26	25				5
	D1	25	20	CLIP, HOOD OPEN WIRE	C8	16	20				
BOLT, FLANGE, 6X16	D3	27	14	CLIP, PISTON PIN, 20MM	C5	13	6				
	C3	11	51	CLIP, TUBE	C11	19	25				
	C9	17	26		C14	22	15				
BOLT, FLANGE, 6X25	C3	11	52	CLIP, VALVE GUIDE	C1	9	4	GASKET SET	C10	18	1
	C16	24	15	CLIP, WIRE HARNESS	C16	24	10	GASKET, CYLINDER HEAD	C1	9	5
BOLT, FLANGE, 6X28	C9	17	25	COIL ASSY., CHARGE	C15	23	7	GASKET, EX. PIPE	C13	21	7
	C15	23	10								9
BOLT, FLANGE, 6X32	C9	17	28	COIL ASSY., IGNITION	C8	16	8	GOVERNOR ASSY.	C3	11	25
	C15	23	11	COIL ASSY., LAMP	C15	23	6	GOVERNOR KIT	C2	10	1
BOLT, FLANGE, 6X35	C3	11	35	COLLAR SET	C10	18	12	GRID, REINFORCEMENT	C7	15	12
	C12	20	6	COLLAR, AIR CLEANER	C12	20	8	GRIP, STARTER	C7	15	10
BOLT, FLANGE, 6X45	C12	20	6					GROMMET, WIRE CORD	C8	16	22
BOLT, FLANGE, 8X14	C13	21	18	COLLAR, DISTANCE	C16	24	11	GUIDE, AIR	C11	19	23
BOLT, FLANGE, 8X16	C13	21	10	COLLAR, EXTENSION	C3	11	31	GUIDE, EX. VALVE	C1	9	3
BOLT, FLANGE, 8X20	C9	17	29	COLLAR, OIL FILTER SETTING	C3	11	44	GUIDE, IN. VALVE	C1	9	2
BOLT, FLANGE, 8X35	C16	24	14	COLLAR, STOPPER	D1	25	12	GUIDE, PUSH ROD	C6	14	15
BOLT, FLANGE, 8X40	C3	11	53	COLLAR, TANK SETTING	C14	22	7				
BOLT, FLANGE, 8X60	C3	11	54	CONTROL ASSY.	D1	25	1				
BOLT, FLANGE, 8X95	C14	22	18								
BOLT, GOVERNOR ARM	D1	25	21	CORD, MAGNET SWITCH	D3	27	1	HARNESS ASSY., SUB WIRE	C8	16	15
	D3	27	15	CORD, STOP SWITCH	C16	24	6	HEAD COMP., CYLINDER	C1	9	1
BOLT, HEAD COVER	C1	9	12		C8	16	17	HOLDER, CABLE	D1	25	9
BOLT, PIVOT	C6	14	16				18	HOLDER, GOVERNOR WEIGHT	D3	27	10
BOLT, RECESSED, 5X14	D2	26	26	COVER COMP., FAN	C8	16	1	HOLDER, SPRING	C3	11	27
BOLT, RECESSED, 5X16	D2	26	26	COVER, AIR CLEANER	C12	20	3	HOLDER, STOP SWITCH CORD	C7	15	9
	D3	27	18				19		C8	16	20
BOLT, RECESSED, 5X22	D3	27	19								
BOLT, STUD, 8X131.5	C1	9	13								
BOLT, STUD, 8X138.5	C1	9	13								
BOLT, STUD, 8X32	C1	9	15								



**PART NAME INDEX**

Part name				Address Page Ref.				Part name				Address Page Ref.				Part name				Address Page Ref.									
				No.	No.	No.					No.	No.	No.					No.	No.	No.									
HOSE, FUEL, 4.5X360.....				C14	22	14	O-RING, 11.8X2.4.....				C3	11	43	ROD, JOINT.....				D1	25	6	ROD, PUSH.....				D3	27	6		
( I )								O-RING, 22.5X2.2.....				C3	11	42	ROPE, RECOIL STARTER.....				C6	14	3	ROTOR, VALVE.....				C7	15	11	
INSULATOR, CARBURETOR.....				C10	18	14	OIL SEAL, 35X52X8.....				C3	11	40	ROTOR COMP., INNER.....				C2	10	13	ROTOR, OIL PUMP OUTER.....				C2	10	14		
						15	OIL SEAL, 8X14X5.....				C3	11	41	RUBBER B, TANK MOUNTING.....				C14	22	5	RUBBER, OIL RETURN.....				C2	10	17		
( J )								( P )																					
JET SET, PILOT, #40.....				C11	19	27	PACKING, BREATHER CAP.....				C2	10	8	SCREEN, OIL FILTER.....				C2	10	21	SCREW SET.....				C10	18	5		
JET, MAIN, #88.....				C11	19	26	PACKING, CARBURETOR.....				C10	18	17	SCREW SET, DRAIN.....				C10	18	6	SCREW, CENTER.....				C7	15	13		
JET, MAIN, #90.....				C11	19	26	PACKING, FUEL CAP.....				C14	22	11	SCREW, PAN, 3X6.....				C11	19	24	SCREW, PAN, 3X8.....				C11	19	24		
JET, MAIN, #92.....				C11	19	26	PACKING, FUEL COCK.....				C11	19	22	SCREW, PAN, 4X14.....				D2	26	27	SCREW, PAN, 5X20.....				D2	26	23		
( K )								PACKING, HEAD COVER.....				C1	9	7	SCREW, PAN, 6X6.....				C13	21	15	SCREW, RECESSED, 5X20.....				D1	25	23	
KEY, SPECIAL WOODRUFF, 25X18.....				C15	23	13	PACKING, INSULATOR.....				C10	18	18	SCREW, RECESSED, 5X35.....				D3	27	17	SCREW, SPECIAL, 6X8.....				C9	17	23		
( L )								PACKING, OIL FILLER CAP.....				C2	10	23	SCREW, TAPPING, 4X6.....				C13	21	12	SCREW, TAPPING, 5X8.....				C13	21	11	
LABEL, CAUTION.....				D4	28	3	PACKING, OIL PAN.....				C2	10	3	SCREW, THROTTLE STOP.....				D2	26	24	SEAL, LAWN COVER.....				C8	16	7		
LEVER, CHOKE JOINT.....				D1	25	13	PAN ASSY., OIL.....				C2	10	2	SEAL, VALVE STEM.....				C6	14	1	SEAT, VALVE SPRING.....				C6	14	13		
							PIN, DOWEL, 10X12.....				C16	24	13	SEPARATOR, MUFFLER.....				C13	21	2	SHAFT, GOVERNOR ARM.....				C3	11	30		
LEVER, COCK.....				C10	18	19	PIN, DOWEL, 12X20.....				C1	9	16	SHROUD, GOVERNOR.....				C3	11	29	SLIDER, GOVERNOR.....				C3	11	29		
LIFTER, VALVE.....				C6	14	5	PIN, DOWEL, 8X12.....				C3	11	38	SPACER COMP., CARBURETOR.....				C10	18	16	SPACER, AIR CLEANER ELBOW.....				C12	20	4		
( M )								PIN, GOVERNOR WEIGHT.....				C3	11	28	SPONGE, FUEL CAP BREATHER.....				C14	22	10	SPRING, CABLE RETURN.....				D1	25	11	
MARK, OPERATOR CAUTION.....				D4	28	2	PIN, LOCK, 10MM.....				C3	11	49	SPRING, COCK LEVER.....				D3	27	12	SPRING, CONTROL ADJUSTING.....				D1	25	10		
MARK, TOP COVER EMBLEM.....				D4	28	1	PIN, PISTON.....				C5	13	3	SPRING, FRICTION.....				D3	27	11	SPRING, GOVERNOR.....				D1	25	7		
MARK, TYPE.....				D4	28	4	PIPE, EX.....				C13	21	6	SPRING, GOVERNOR PRIMARY.....				D1	25	8	SPRING, LEVER.....				D3	27	9		
MOTOR ASSY., STARTER.....				C16	24	1	PISTON.....				C5	13	2	SPRING, RATCHET.....				C7	15	7	SPRING, STARTER RETURN.....				C7	15	6		
MUFFLER COMP.....				C13	21	1	PIVOT, ROCKER ARM.....				C6	14	6	SPRING, VALVE.....				C6	14	10	SPRING, WEIGHT RETURN.....				C6	14	7		
( N )								PLATE COMP., SUCTION.....				C2	10	20	STARTER ASSY., RECOIL.....				C7	15	1								
NOZZLE, MAIN.....				C10	18	11	PLATE, COOLING FAN SETTING.....				C15	23	2																
NUT-WASHER, 6MM.....				C16	24	12	PLATE, LEVER SETTING.....				C10	18	20																
NUT, FLANGE, 6MM.....				C9	17	27	PLATE, OIL FILTER.....				C2	10	15																
							PLATE, OIL STOPPER.....				C2	10	19																
							PLATE, ONEWAY VALVE.....				C2	10	9																
NUT, FLANGE, 8MM.....				C13	21	16	PLATE, SCREW ADJUST GUARD.....				D3	27	2																
NUT, PIVOT ADJUSTING.....				C6	14	17	PLATE, SIDE.....				C8	16	2																
NUT, SPECIAL, 16MM.....				C15	23	12	PLUG, SPARK.....				C1	9	18																
NUT, WING, 6MM.....				C12	20	7	PROTECTOR, MUFFLER.....				C13	21	4																
( O )								PROTECTOR, SWITCH.....				C3	11	33															
O-RING, PUMP COVER.....				C2	10	12	PULLEY COMP., STARTER.....				C15	23	3																
							PULLEY, RECOIL STARTER.....				C7	15	3																
							( R )																						
							RATCHET, STARTER.....				C7	15	4																
							RECTIFIER ASSY., REGULATOR.....				C8	16	11																
							RECTIFIER ASSY., SILICON.....				C8	16	12																
							RECTIFIER COMP., SILICON.....				C8	16	13																
							RETAINER, EX. VALVE SPRING.....				C6	14	12																
							RETAINER, IN. VALVE SPRING.....				C6	14	11																
							RETAINER, SPRING.....				C7	15	8																
							RING SET, PISTON.....				C5	13	1																
							ROD ASSY., CONNECTING.....				C5	13	4																
							ROD, CHOKE.....				D1	25	5																
							ROD, GOVERNOR.....				D1	25	4																
											D3	27	5																
											D1	25	4																
											D3	27	4																

Part name	Address No.	Page No.	Ref. No.	Part name	Address No.	Page No.	Ref. No.	Part name	Address No.	Page No.	Ref. No.
STAY COMP., MUFFLER.....	C13	21	3								
STAY COMP., UNDER COVER.....	C1	9	9								
STAY, BUZZER.....	D1	25	18								
STOPPER SET, PINION.....	C16	24	3								
STOPPER, OIL.....	C2	10	18								
STRAINER COMP., FUEL.....	C14	22	1								
STRAINER, FUEL.....	C14	22	2								
SUSPENSION, AUDIBLE PILOT.....	D1	25	19								
SWITCH ASSY., ENGINE.....	D1	25	14								
SWITCH ASSY., ENGINE STOP.....	D1	25	16								
SWITCH ASSY., STARTER MAGNETIC.....	C16	24	9								
SWITCH COMP., OIL LEVEL.....	C3	11	32								
[ T ]											
TANK, FUEL.....	C14	22	3								
TUBE, AIR VENT.....	C10	18	13								
TUBE, BREATHER.....	C2	10	5								
TUBE, FUEL.....	C14	22	4								
TUBE, FUEL, 4.5X180.....	C10	18	13								
[ V ]											
VALVE SET, FLOAT.....	C10	18	2								
VALVE, BREATHER.....	C2	10	7								
VALVE, EX.....	C6	14	9								
VALVE, IN.....	C6	14	8								
VALVE, ONEWAY.....	C2	10	10								
[ W ]											
WASHER COMP., HEAD COVER.....	C1	9	14								
WASHER, DRAIN PLUG, 20MM.....	C3	11	48								
WASHER, PLAIN, 6MM.....	C3	11	46								
			47								
	C13	21	17								
	D2	26	29								
	D3	27	21								
WASHER, PLAIN, 8MM.....	C14	22	13								
WASHER, SPRING, 4MM.....	D2	26	30								
WASHER, SPRING, 5MM.....	D2	26	31								
WASHER, TANK MOUNTING.....	C14	22	12								
WASHER, THRUST, 15MM.....	C4	12	4								
WASHER, THRUST, 8.1MM.....	C3	11	36								
WEIGHT A, BALANCER.....	C4	12	2								
WEIGHT B, BALANCER.....	C4	12	3								
WEIGHT, GOVERNOR.....	C3	11	26								
WRENCH, BOX.....	D4	28	5								



GXV390K1

# INDEX

---

**1** FOREWORD INDEX

---

**2** ENGINE GROUP

---

**3** PART NUMBER INDEX

---

**4** PART NAME INDEX

---